

LTC09D130

Title: LTC Reviews – Assessment
Version: Final
Circulation: Learning and Teaching Committee – 21 April 2010
Agenda: LTC09A006
Status: Open

Degree classifications 2008/9

1.1 The HESA release of 25 March 2010 allowed UEA degree classifications awarded in 2008/9 to be compared with the 1994 Group and the UK. For most Schools this is the fourth year that this has been possible and the attached data in the form of graphs by School is starting to present a useful time series for consideration.

1.2 The following table indicates the JACS principal codes for which UEA has returned numbers to HESA, and which JACS codes have been attributed to Schools to produce the graphs in the following report. The UEA (School) numbers in the following graphs have been taken from SITS in all cases except NAM where the multiple start and end dates of courses make the HESA figures more reliable to use.

JACS codes	School
B1, B6, B9	AHP
B7	NAM*
T7	AMS
V3	ART
W4	DRA
W6	FTV
V1	HIS
Q3, W8	LCW
R1, R6, R9	LLT
W3	MUS
V5	PHI
L2	PSI
L7	DEV
L1	ECO
C6	EDU
M1	LAW
N2, N4	NBS
C8, L5	SWP
C1, C7, C9	BIO
F1	CHE
G4, G5	CMP
F6, F7	ENV
G1	MTH
B2	PHA

* using numbers returned to HESA (rounded to nearest 5)

1.3 School information will be sent to Heads of School and School Directors of Learning and Teaching for consideration.

Additional notes

(1) School of Medicine, Health Policy and Practice

MED is not included as MBBS degrees are not classified.

(2) Single and joint honours

JACS coding in HESA returns is particularly helpful for comparing outcomes for students taking courses with single honours. However, UEA also offers many courses for students wishing to take joint honours but obtaining this level of detail for degree subject areas for comparison with other UK institutions is currently not possible from the HESA data to which we have access.

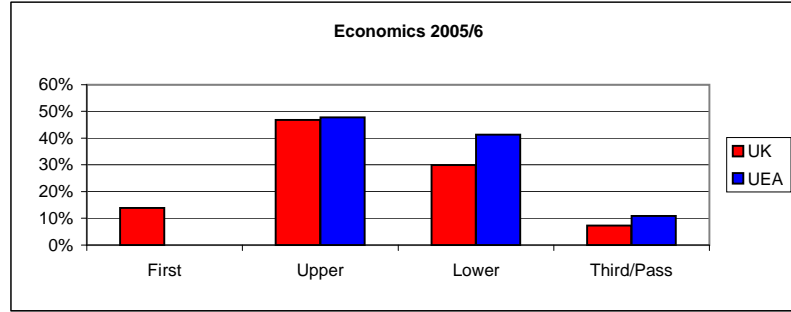
(3) Numbers involved

Some numbers are quite small, not just for UEA but for the 1994 Group. HESA figures are rounded to the nearest 5, which in some cases is enough for a margin of uncertainty in the precision of the calculated percentage to exist (i.e. there is sensitivity to small changes).

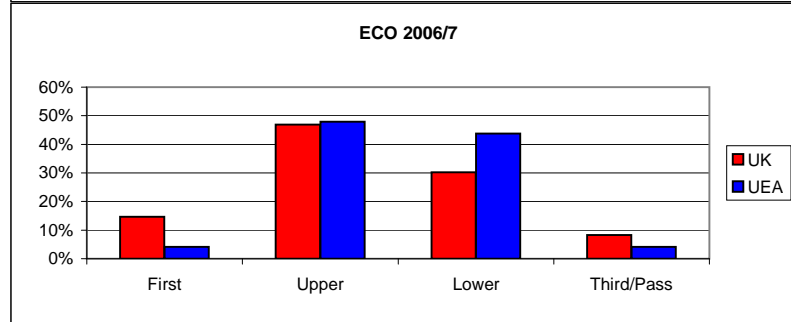
(3) Context

UEA Schools are best placed to interpret the outcomes in terms of degree classifications awarded. Numerous factors, such as comments from external examiners, changes in admissions criteria, module availability, degree regulations and assessment strategy can all impact on the outcomes. These factors must be taken into consideration in any discussions that seek to understand the emerging patterns in degree classifications awarded.

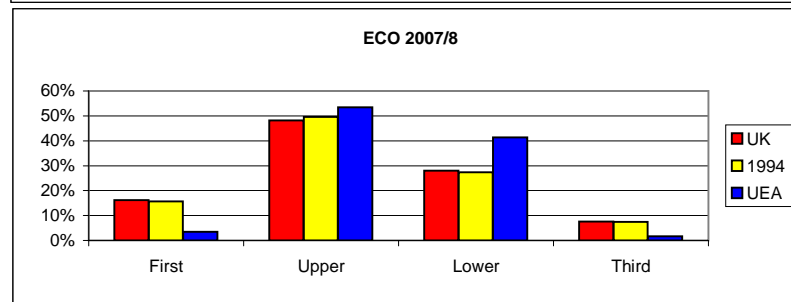
	Total awarded	First	Upper	Lower	Third/Pass
Economic:					
UK	6720	935	3150	2010	490
UEA	46	0	22	19	5
UK		13.9%	46.9%	29.9%	7.3%
UEA		0.0%	47.8%	41.3%	10.9%



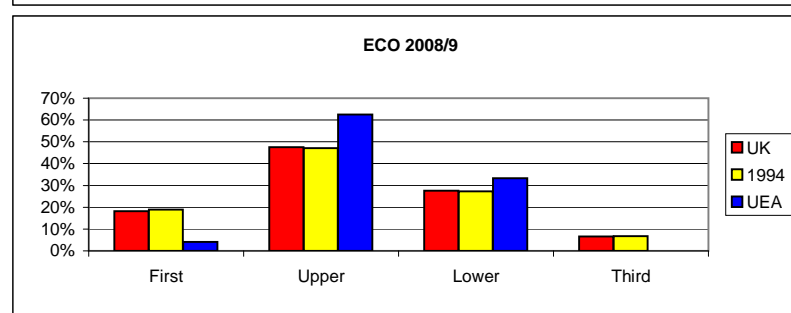
	Total awarded	First	Upper	Lower	Third/Pass
ECO					
UK	6255	915	2935	1890	515
UEA	48	2	23	21	2
UK		14.6%	46.9%	30.2%	8.2%
UEA		4.2%	47.9%	43.8%	4.2%



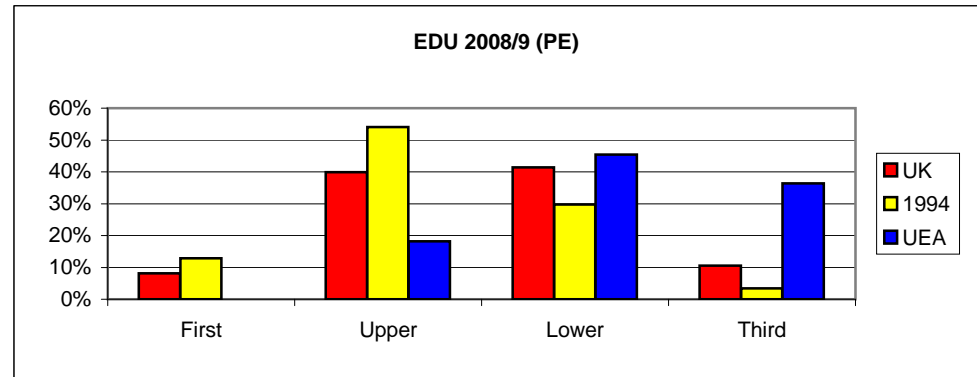
	Total awarded	First	Upper	Lower	Third
ECO					
UK	6225	1010	3000	1740	475
1994	1755	275	870	480	130
UEA	58	2	31	24	1
UK		16.2%	48.2%	28.0%	7.6%
1994		15.7%	49.6%	27.4%	7.4%
UEA		3.4%	53.4%	41.4%	1.7%



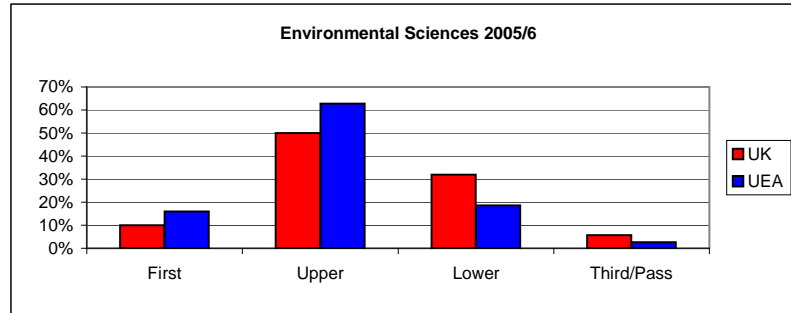
	Total awarded	First	Upper	Lower	Third
ECO					
UK	6015	1095	2860	1660	400
1994	1775	335	835	485	120
UEA	48	2	30	16	0
UK		18.2%	47.5%	27.6%	6.7%
1994		18.9%	47.0%	27.3%	6.8%
UEA		4.2%	62.5%	33.3%	0.0%



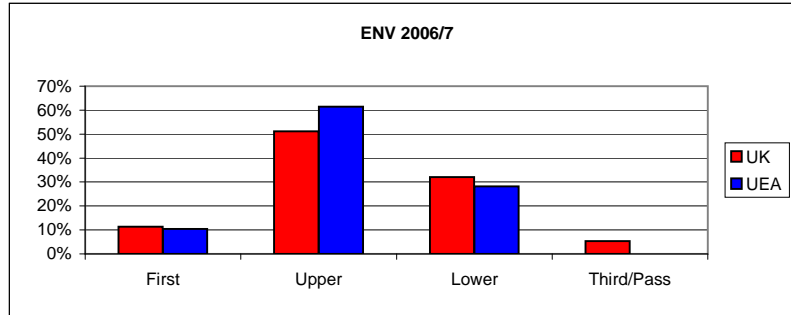
EDU	Total awarded	First	Upper	Lower	Third
UK	7585	620	3025	3140	800
1994	740	95	400	220	25
UEA	11	0	2	5	4
UK		8.2%	39.9%	41.4%	10.5%
1994		12.8%	54.1%	29.7%	3.4%
UEA		0.0%	18.2%	45.5%	36.4%



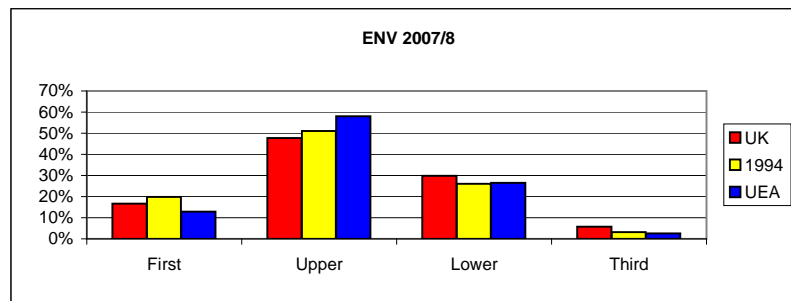
	Total awarded	First	Upper	Lower	Third/Pass
Environmental Sciences	4175	420	2090	1335	235
UK					
UEA	113	18	71	21	3
UK		10.1%	50.1%	32.0%	5.6%
UEA		15.9%	62.8%	18.6%	2.7%



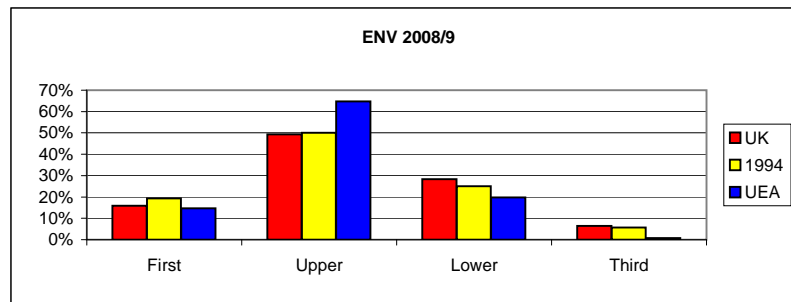
	Total awarded	First	Upper	Lower	Third/Pass
ENV 2006/7	5085	580	2605	1630	270
UK					
UEA	96	10	59	27	0
UK		11.4%	51.2%	32.1%	5.3%
UEA		10.4%	61.5%	28.1%	0.0%



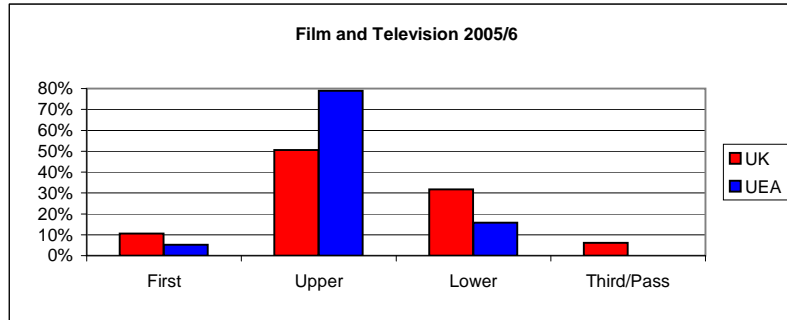
	Total awarded	First	Upper	Lower	Third
ENV 2007/8	2315	385	1105	690	135
UK					
1994	480	95	245	125	15
UEA	155	20	90	41	4
UK		16.6%	47.7%	29.8%	5.8%
1994		19.8%	51.0%	26.0%	3.1%
UEA		12.9%	58.1%	26.5%	2.6%



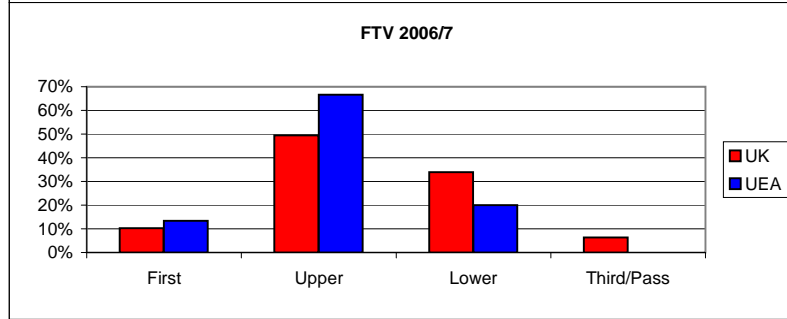
	Total awarded	First	Upper	Lower	Third
ENV 2008/9	2325	370	1145	660	150
UK					
1994	440	85	220	110	25
UEA	136	20	88	27	1
UK		15.9%	49.2%	28.4%	6.5%
1994		19.3%	50.0%	25.0%	5.7%
UEA		14.7%	64.7%	19.9%	0.7%



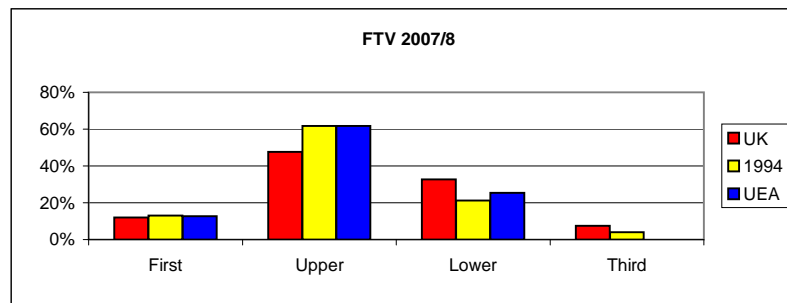
	Total awarded	First	Upper	Lower	Third/Pass
Film and Television 2005/6					
UK	3130	330	1585	995	190
UEA	57	3	45	9	0
UK		10.5%	50.6%	31.8%	6.1%
UEA		5.3%	78.9%	15.8%	0.0%



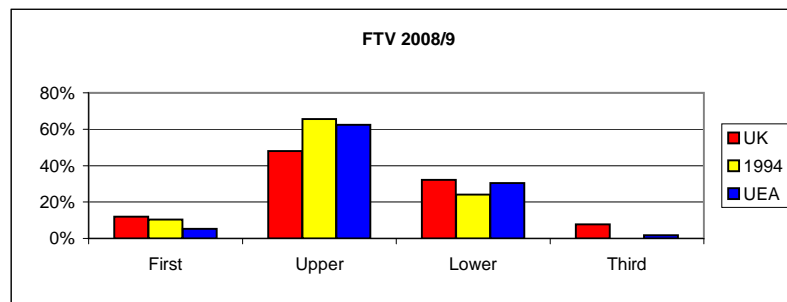
	Total awarded	First	Upper	Lower	Third/Pass
FTV 2006/7					
UK	3375	345	1670	1145	215
UEA	15	2	10	3	0
UK		10.2%	49.5%	33.9%	6.4%
UEA		13.3%	66.7%	20.0%	0.0%



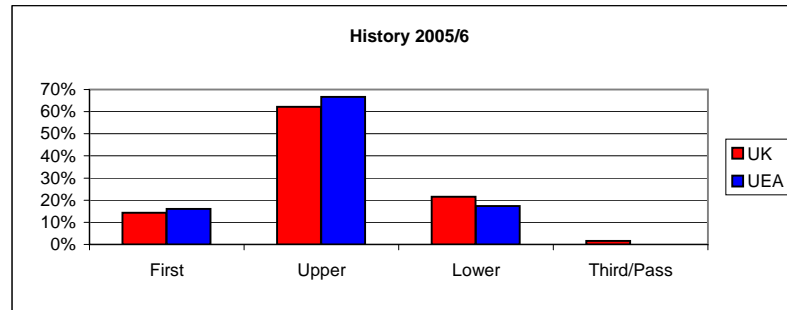
	Total awarded	First	Upper	Lower	Third
FTV 2007/8					
UK	3250	390	1550	1065	245
1994	615	80	380	130	25
UEA	55	7	34	14	0
UK		12.0%	47.7%	32.8%	7.5%
1994		13.0%	61.8%	21.1%	4.1%
UEA		12.7%	61.8%	25.5%	0.0%



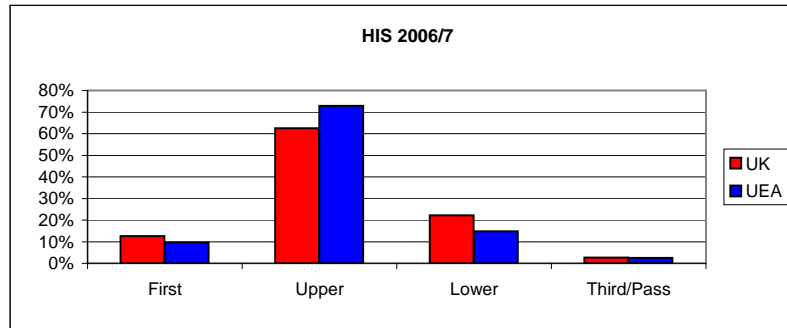
	Total awarded	First	Upper	Lower	Third
FTV 2008/9					
UK	3490	420	1675	1125	270
1994	145	15	95	35	0
UEA	56	3	35	17	1
UK		12.0%	48.0%	32.2%	7.7%
1994		10.3%	65.5%	24.1%	0.0%
UEA		5.4%	62.5%	30.4%	1.8%



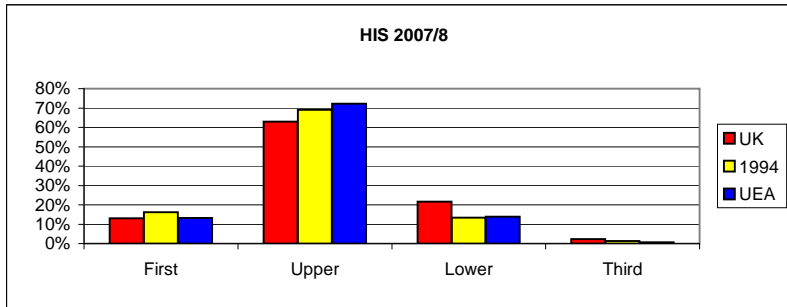
History	Total	First	Upper	Lower	Third/Pass
	awarded				
UK	1600	230	995	345	25
UEA	75	12	50	13	0
UK		14.4%	62.2%	21.6%	1.6%
UEA		16.0%	66.7%	17.3%	0.0%



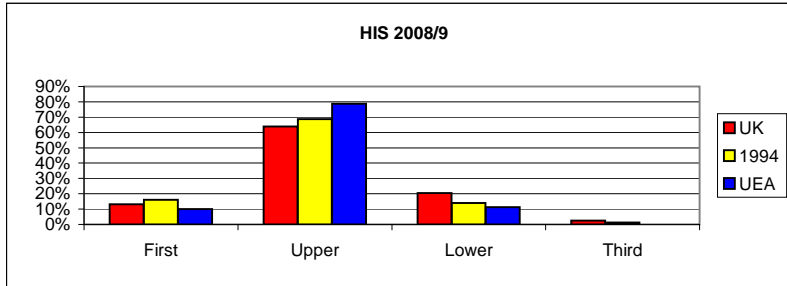
HIS	Total	First	Upper	Lower	Third/Pass
	awarded				
UK	8370	1055	5235	1860	220
UEA	155	15	113	23	4
UK		12.6%	62.5%	22.2%	2.6%
UEA		9.7%	72.9%	14.8%	2.6%



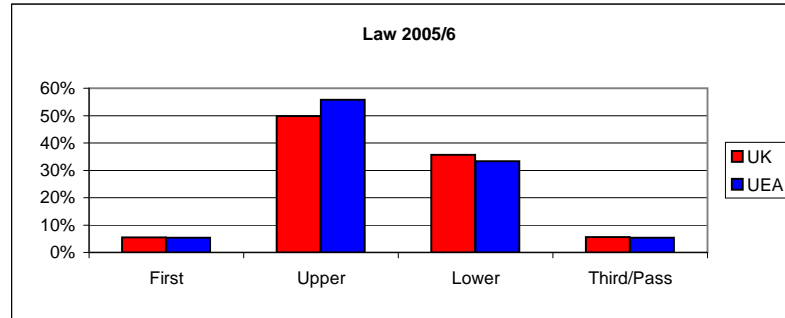
HIS	Total	First	Upper	Lower	Third
	awarded				
UK	8895	1160	5595	1930	210
1994	1970	320	1360	265	25
UEA	151	20	109	21	1
UK		13.0%	62.9%	21.7%	2.4%
1994		16.2%	69.0%	13.5%	1.3%
UEA		13.2%	72.2%	13.9%	0.7%



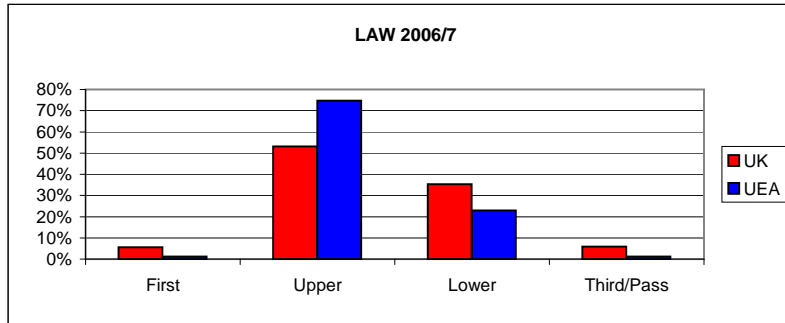
HIS	Total	First	Upper	Lower	Third
	awarded				
UK	8470	1115	5405	1730	220
1994	1930	310	1325	270	25
UEA	150	15	118	17	0
UK		13.2%	63.8%	20.4%	2.6%
1994		16.1%	68.7%	14.0%	1.3%
UEA		10.0%	78.7%	11.3%	0.0%



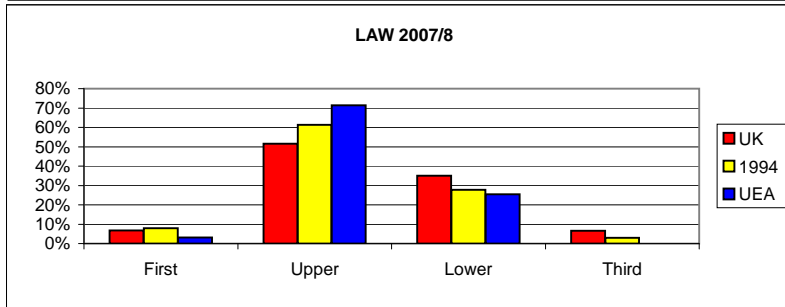
	Total awarded	First	Upper	Lower	Third/Pass
Law					
UK	5660	310	2820	2020	320
UEA	129	7	72	43	7
UK		5.5%	49.8%	35.7%	5.7%
UEA		5.4%	55.8%	33.3%	5.4%



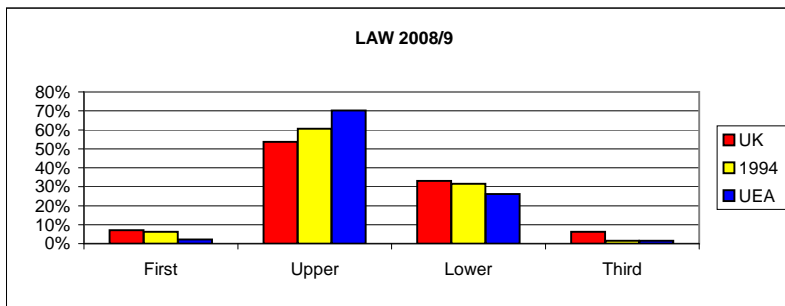
	Total awarded	First	Upper	Lower	Third/Pass
LAW					
UK	6190	350	3290	2185	365
UEA	174	2	130	40	2
UK		5.7%	53.2%	35.3%	5.9%
UEA		1.1%	74.7%	23.0%	1.1%



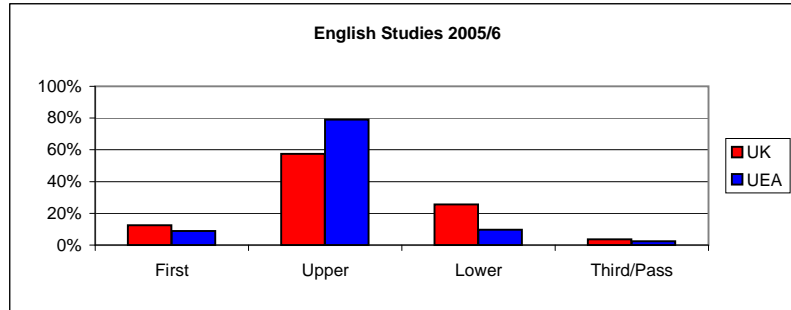
	Total awarded	First	Upper	Lower	Third
LAW					
UK	14295	970	7380	5000	945
1994	1695	135	1040	470	50
UEA	126	4	90	32	0
UK		6.8%	51.6%	35.0%	6.6%
1994		8.0%	61.4%	27.7%	2.9%
UEA		3.2%	71.4%	25.4%	0.0%



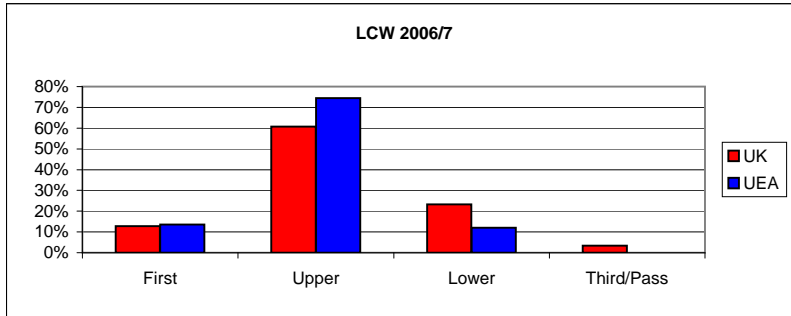
	Total awarded	First	Upper	Lower	Third
LAW					
UK	6410	450	3440	2125	395
1994	635	40	385	200	10
UEA	138	3	97	36	2
UK		7.0%	53.7%	33.2%	6.2%
1994		6.3%	60.6%	31.5%	1.6%
UEA		2.2%	70.3%	26.1%	1.4%



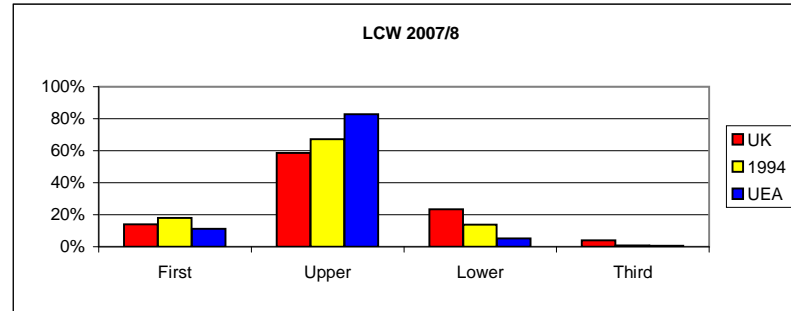
	Total awarded	First	Upper	Lower	Third/Pass
English Studies					
UK	11175	1395	6410	2855	400
UEA	124	11	98	12	3
UK		12.5%	57.4%	25.5%	3.6%
UEA		8.9%	79.0%	9.7%	2.4%



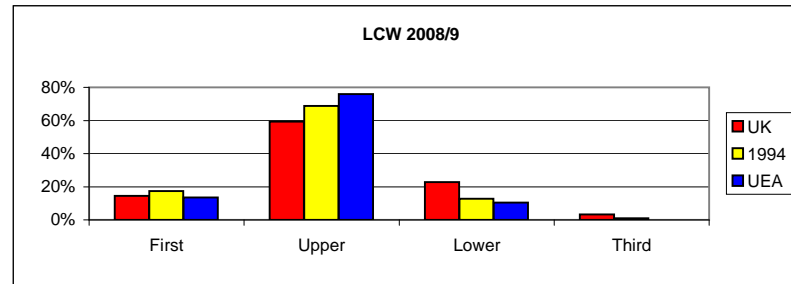
	Total awarded	First	Upper	Lower	Third/Pass
LCW					
UK	15215	1940	9230	3530	515
UEA	125	17	93	15	0
UK		12.8%	60.7%	23.2%	3.4%
UEA		13.6%	74.4%	12.0%	0.0%



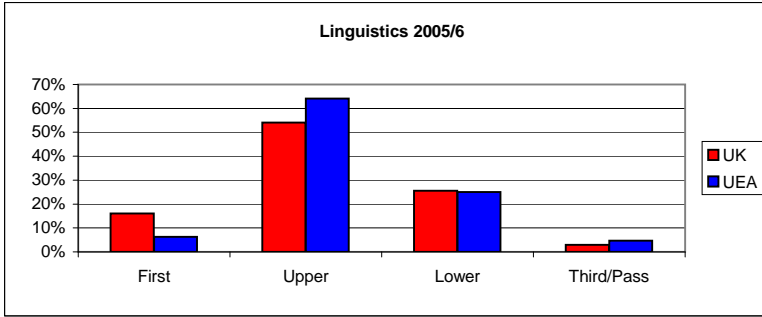
	Total awarded	First	Upper	Lower	Third
LCW					
UK	12290	1715	7210	2875	490
1994	2240	405	1505	310	20
UEA	151	17	125	8	1
UK		14.0%	58.7%	23.4%	4.0%
1994		18.1%	67.2%	13.8%	0.9%
UEA		11.3%	82.8%	5.3%	0.7%



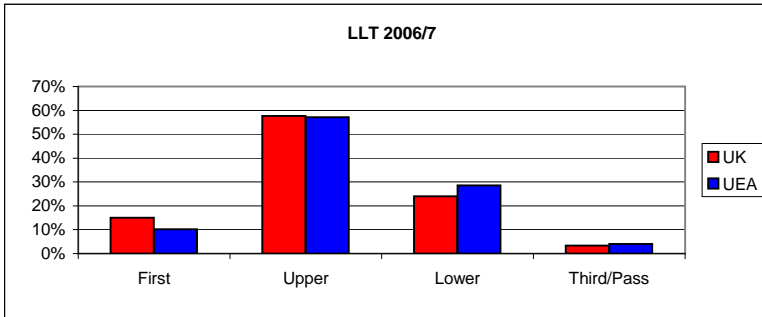
	Total awarded	First	Upper	Lower	Third
LCW					
UK	12370	1800	7330	2830	410
1994	2180	380	1500	280	20
UEA	125	17	95	13	0
UK		14.6%	59.3%	22.9%	3.3%
1994		17.4%	68.8%	12.8%	0.9%
UEA		13.6%	76.0%	10.4%	0.0%



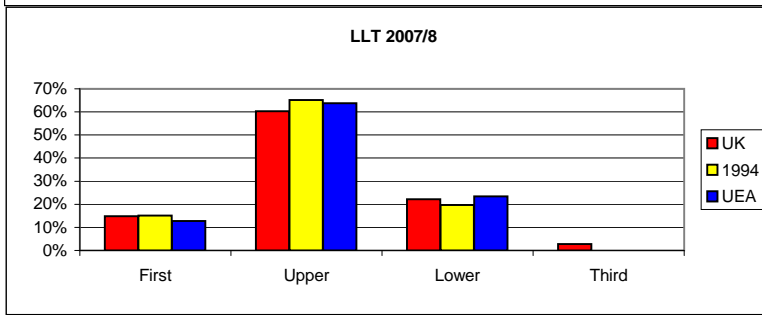
	Total awarded	First	Upper	Lower	Third/Pass
Linguistics					
UK	685	110	370	175	20
UEA	64	4	41	16	3
UK		16.1%	54.0%	25.5%	2.9%
UEA		6.3%	64.1%	25.0%	4.7%



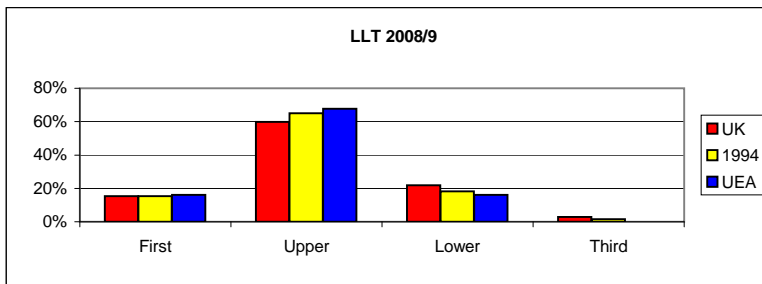
	Total awarded	First	Upper	Lower	Third/Pass
LLT					
UK	2125	320	1225	510	70
UEA	49	5	28	14	2
UK		15.1%	57.6%	24.0%	3.3%
UEA		10.2%	57.1%	28.6%	4.1%



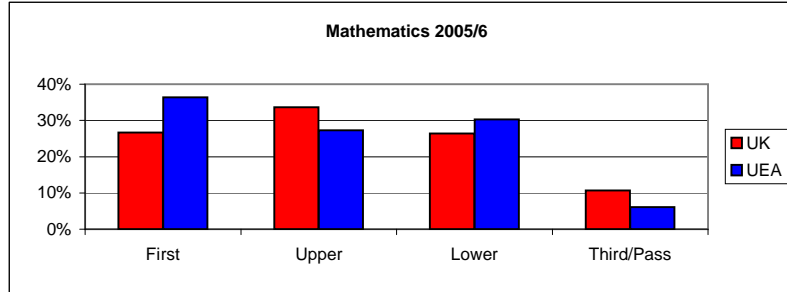
	Total awarded	First	Upper	Lower	Third
LLT					
UK	4610	685	2780	1020	125
1994	990	150	645	195	0
UEA	47	6	30	11	0
UK		14.9%	60.3%	22.1%	2.7%
1994		15.2%	65.2%	19.7%	0.0%
UEA		12.8%	63.8%	23.4%	0.0%



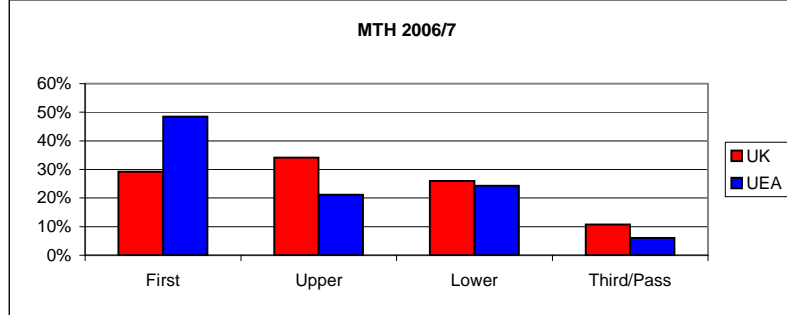
	Total awarded	First	Upper	Lower	Third
LLT					
UK	2940	450	1760	645	85
1994	685	105	445	125	10
UEA	31	5	21	5	0
UK		15.3%	59.9%	21.9%	2.9%
1994		15.3%	65.0%	18.2%	1.5%
UEA		16.1%	67.7%	16.1%	0.0%



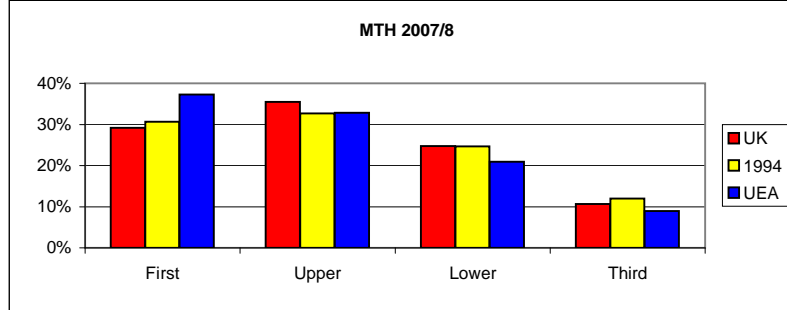
	Total awarded	First	Upper	Lower	Third/Pass
Mathematics					
UK	4815	1285	1620	1270	515
UEA	33	12	9	10	2
UK		26.7%	33.6%	26.4%	10.7%
UEA		36.4%	27.3%	30.3%	6.1%



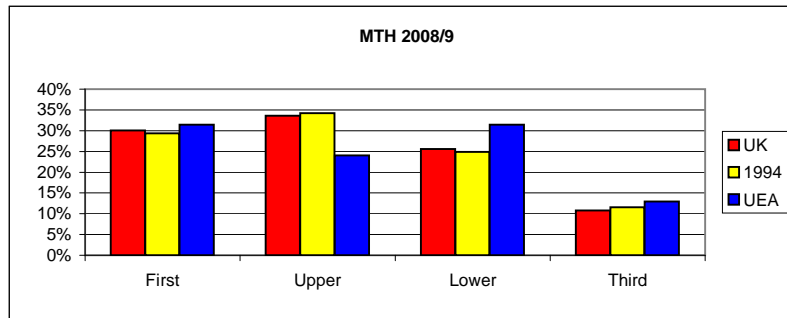
	Total awarded	First	Upper	Lower	Third/Pass
MTH					
UK	4900	1430	1675	1270	525
UEA	33	16	7	8	2
UK		29.2%	34.2%	25.9%	10.7%
UEA		48.5%	21.2%	24.2%	6.1%



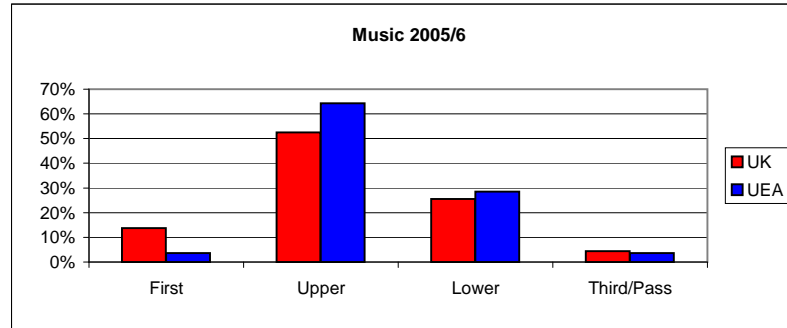
	Total awarded	First	Upper	Lower	Third
MTH					
UK	5160	1505	1830	1275	550
1994	1255	385	410	310	150
UEA	67	25	22	14	6
UK		29.2%	35.5%	24.7%	10.7%
1994		30.7%	32.7%	24.7%	12.0%
UEA		37.3%	32.8%	20.9%	9.0%



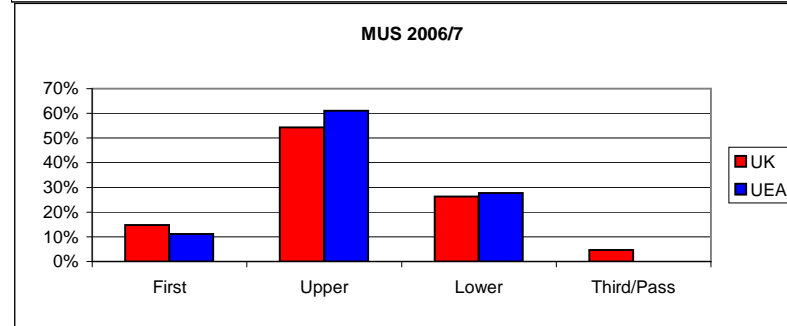
	Total awarded	First	Upper	Lower	Third
MTH					
UK	5360	1610	1800	1370	580
1994	1345	395	460	335	155
UEA	54	17	13	17	7
UK		30.0%	33.6%	25.6%	10.8%
1994		29.4%	34.2%	24.9%	11.5%
UEA		31.5%	24.1%	31.5%	13.0%



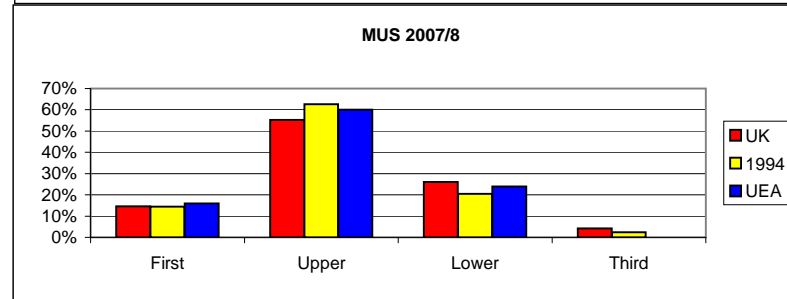
	Total awarded	First	Upper	Lower	Third/Pass
Music					
UK	4025	555	2115	1030	180
UEA	28	1	18	8	1
UK		13.8%	52.5%	25.6%	4.5%
UEA		3.6%	64.3%	28.6%	3.6%



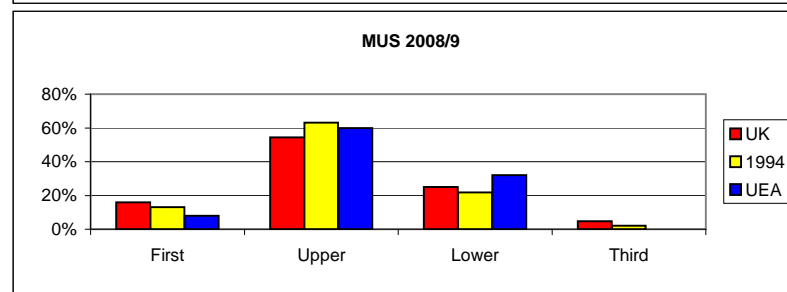
	Total awarded	First	Upper	Lower	Third/Pass
MUS					
UK	4165	615	2260	1095	195
UEA	18	2	11	5	0
UK		14.8%	54.3%	26.3%	4.7%
UEA		11.1%	61.1%	27.8%	0.0%



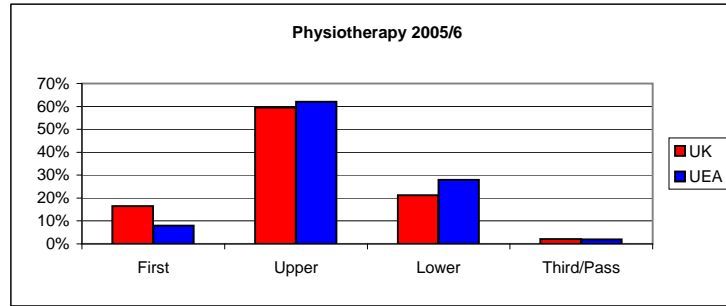
	Total awarded	First	Upper	Lower	Third
MUS					
UK	4460	650	2465	1160	185
1994	415	60	260	85	10
UEA	25	4	15	6	0
UK		14.6%	55.3%	26.0%	4.1%
1994		14.5%	62.7%	20.5%	2.4%
UEA		16.0%	60.0%	24.0%	0.0%



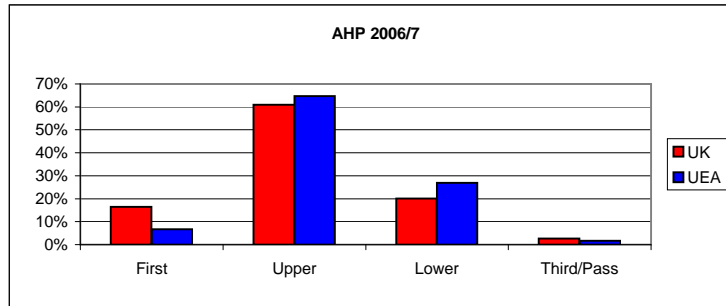
	Total awarded	First	Upper	Lower	Third
MUS					
UK	4625	735	2515	1160	215
1994	460	60	290	100	10
UEA	25	2	15	8	0
UK		15.9%	54.4%	25.1%	4.6%
1994		13.0%	63.0%	21.7%	2.2%
UEA		8.0%	60.0%	32.0%	0.0%



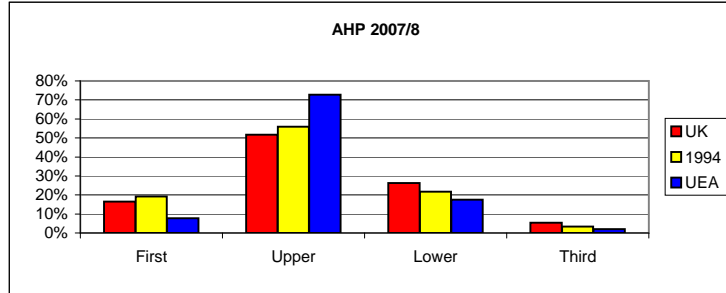
	Total awarded	First	Upper	Lower	Third/Pass
Physiotherapy	4100	675	2440	870	85
UK					
UEA	50	4	31	14	1
UK		16.5%	59.5%	21.2%	2.1%
UEA		8.0%	62.0%	28.0%	2.0%



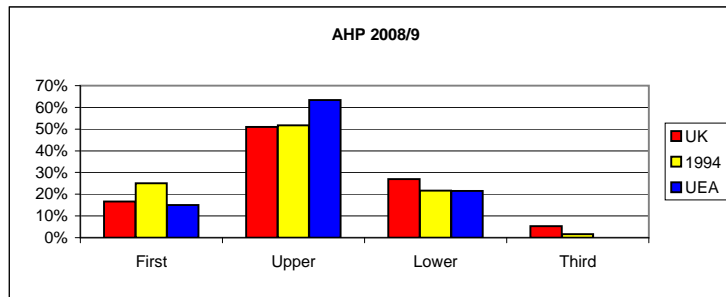
	Total awarded	First	Upper	Lower	Third/Pass
AHP	4145	680	2525	830	110
UK					
UEA	119	8	77	32	2
UK		16.4%	60.9%	20.0%	2.7%
UEA		6.7%	64.7%	26.9%	1.7%



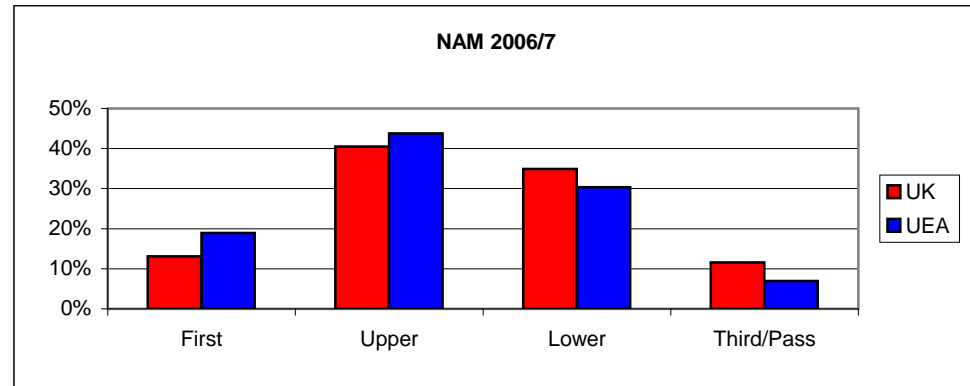
	Total awarded	First	Upper	Lower	Third
AHP	9950	1650	5150	2620	530
UK					
1994	600	115	335	130	20
UEA	103	8	75	18	2
UK		16.6%	51.8%	26.3%	5.3%
1994		19.2%	55.8%	21.7%	3.3%
UEA		7.8%	72.8%	17.5%	1.9%



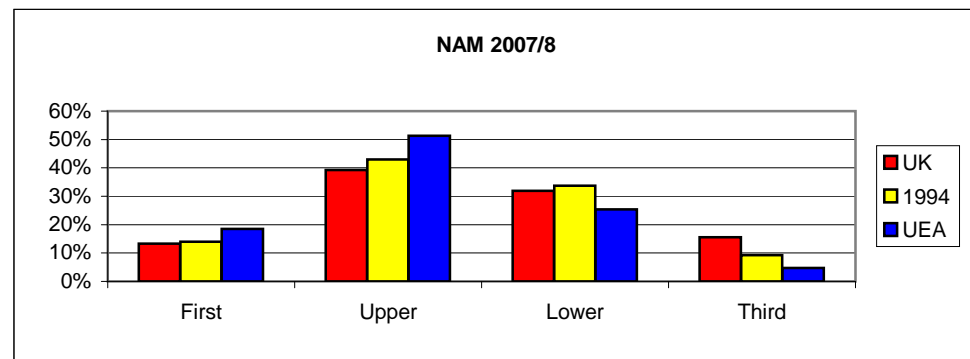
	Total awarded	First	Upper	Lower	Third
AHP	9515	1590	4845	2570	510
UK					
1994	600	150	310	130	10
UEA	93	14	59	20	0
UK		16.7%	50.9%	27.0%	5.4%
1994		25.0%	51.7%	21.7%	1.7%
UEA		15.1%	63.4%	21.5%	0.0%



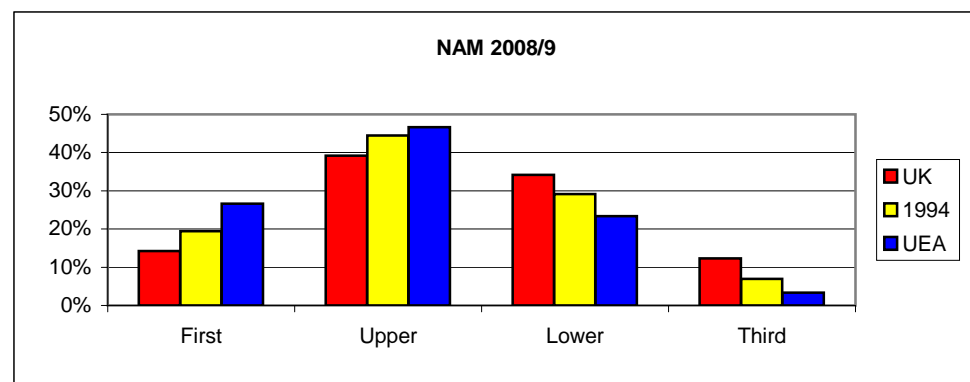
		Total				
NAM	awarded	First	Upper	Lower	Third/Pass	
UK	10640	1390	4305	3715	1230	
UEA	201	38	88	61	14	
UK		13.1%	40.5%	34.9%	11.6%	
UEA		18.9%	43.8%	30.3%	7.0%	



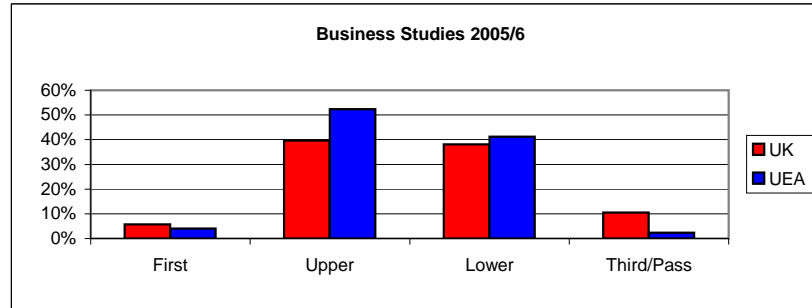
		Total				
NAM	awarded	First	Upper	Lower	Third	
UK	11455	1525	4490	3660	1780	
1994	430	60	185	145	40	
UEA	189	35	97	48	9	
UK		13.3%	39.2%	32.0%	15.5%	
1994		14.0%	43.0%	33.7%	9.3%	
UEA		18.5%	51.3%	25.4%	4.8%	



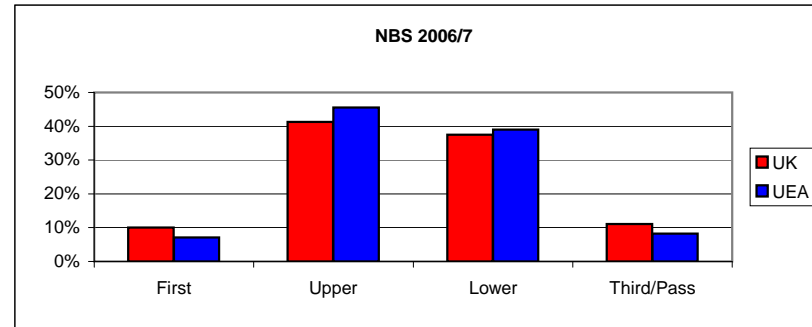
		Total				
NAM	awarded	First	Upper	Lower	Third	
UK	10630	1515	4170	3635	1310	
1994	360	70	160	105	25	
UEA	150	40	70	35	5	
UK		14.3%	39.2%	34.2%	12.3%	
1994		19.4%	44.4%	29.2%	6.9%	
UEA		26.7%	46.7%	23.3%	3.3%	



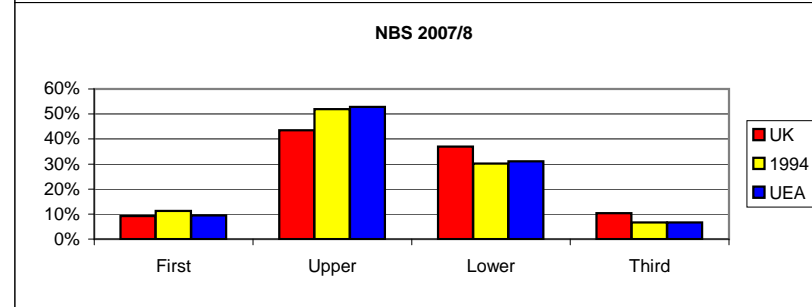
	Total awarded	First	Upper	Lower	Third/Pass
Business					
UK	19230	1090	7620	7320	2020
UEA	126	5	66	52	3
UK		5.7%	39.6%	38.1%	10.5%
UEA		4.0%	52.4%	41.3%	2.4%



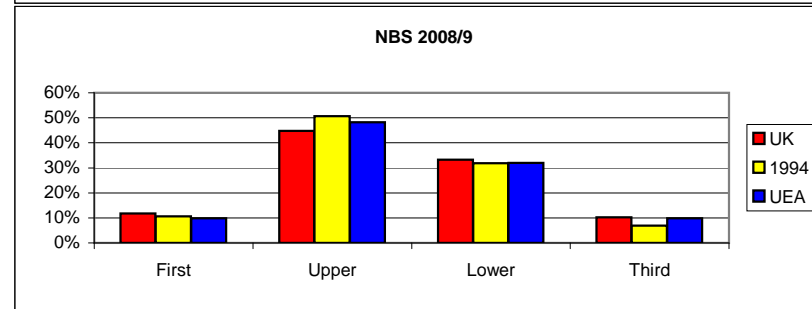
	Total awarded	First	Upper	Lower	Third/Pass
NBS					
UK	13210	1330	5460	4960	1460
UEA	169	12	77	66	14
UK		10.1%	41.3%	37.5%	11.1%
UEA		7.1%	45.6%	39.1%	8.3%



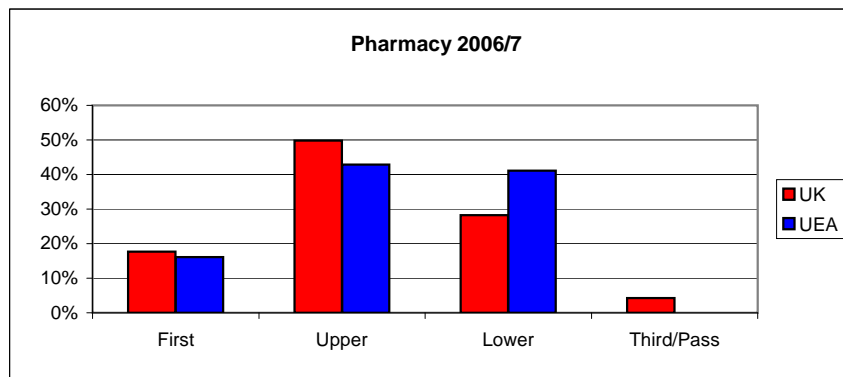
	Total awarded	First	Upper	Lower	Third
NBS					
UK	30845	2840	13410	11385	3210
1994	1725	195	895	520	115
UEA	180	17	95	56	12
UK		9.2%	43.5%	36.9%	10.4%
1994		11.3%	51.9%	30.1%	6.7%
UEA		9.4%	52.8%	31.1%	6.7%



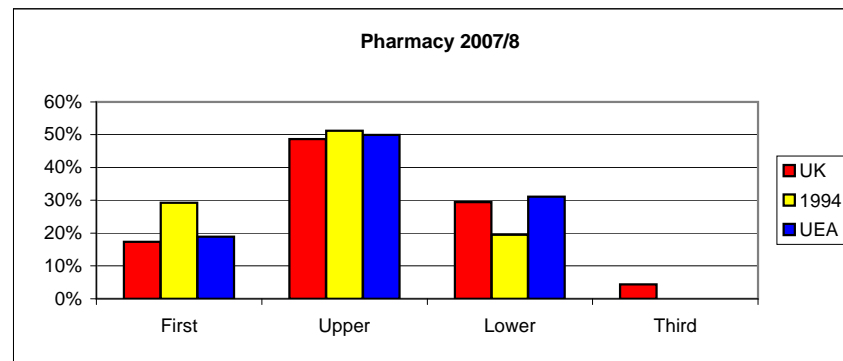
	Total awarded	First	Upper	Lower	Third
NBS					
UK	13720	1615	6140	4555	1410
1994	1885	200	955	600	130
UEA	203	20	98	65	20
UK		11.8%	44.8%	33.2%	10.3%
1994		10.6%	50.7%	31.8%	6.9%
UEA		9.9%	48.3%	32.0%	9.9%



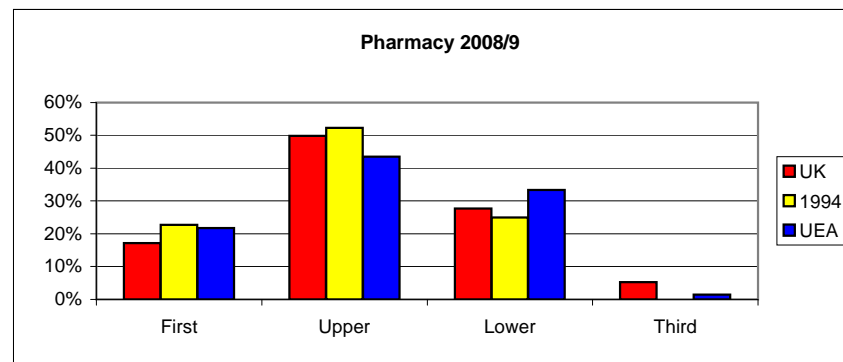
	Total awarded	First	Upper	Lower	Third/Pass
PHA					
UK	2570	455	1280	725	110
UEA	56	9	24	23	0
UK		17.7%	49.8%	28.2%	4.3%
UEA		16.1%	42.9%	41.1%	0.0%



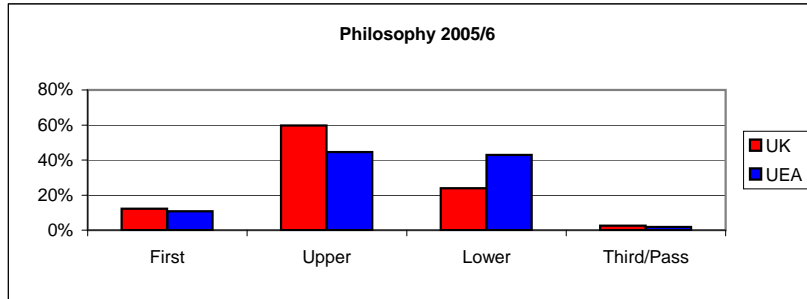
	Total awarded	First	Upper	Lower	Third
PHA					
UK	2730	475	1330	805	120
1994	205	60	105	40	0
UEA	74	14	37	23	0
UK		17.4%	48.7%	29.5%	4.4%
1994		29.3%	51.2%	19.5%	0.0%
UEA		18.9%	50.0%	31.1%	0.0%



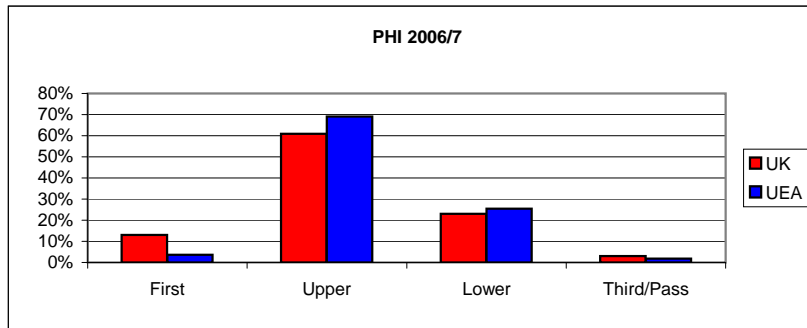
	Total awarded	First	Upper	Lower	Third
PHA					
UK	3210	550	1600	890	170
1994	220	50	115	55	0
UEA	69	15	30	23	1
UK		17.1%	49.8%	27.7%	5.3%
1994		22.7%	52.3%	25.0%	0.0%
UEA		21.7%	43.5%	33.3%	1.4%



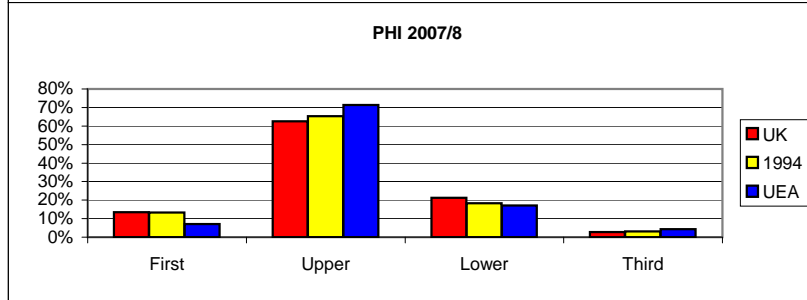
	Total awarded	First	Upper	Lower	Third/Pass
Philosophy					
UK	2195	270	1310	525	55
UEA	56	6	25	24	1
UK		12.3%	59.7%	23.9%	2.5%
UEA		10.7%	44.6%	42.9%	1.8%



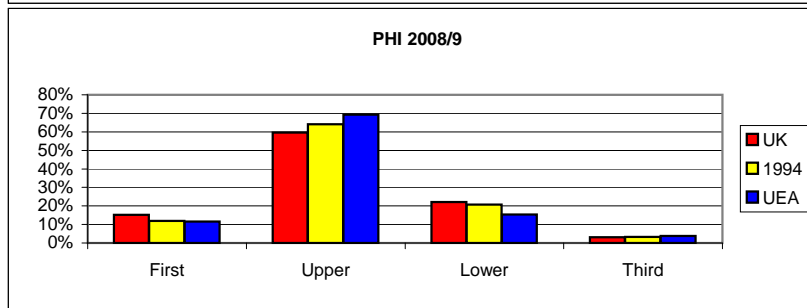
	Total awarded	First	Upper	Lower	Third/Pass
PHI					
UK	2110	275	1285	485	65
UEA	55	2	38	14	1
UK		13.0%	60.9%	23.0%	3.1%
UEA		3.6%	69.1%	25.5%	1.8%



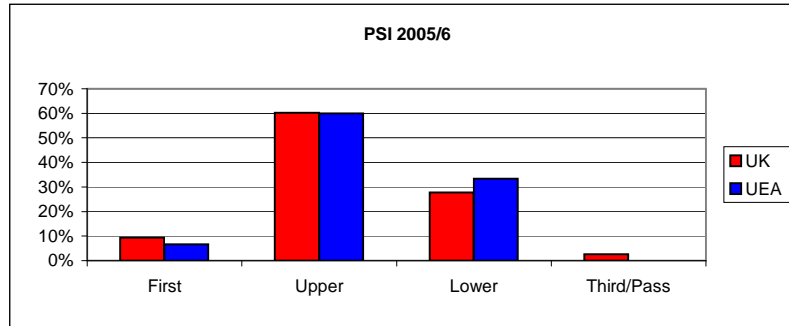
	Total awarded	First	Upper	Lower	Third
PHI					
UK	2360	320	1475	500	65
1994	490	65	320	90	15
UEA	70	5	50	12	3
UK		13.6%	62.5%	21.2%	2.8%
1994		13.3%	65.3%	18.4%	3.1%
UEA		7.1%	71.4%	17.1%	4.3%



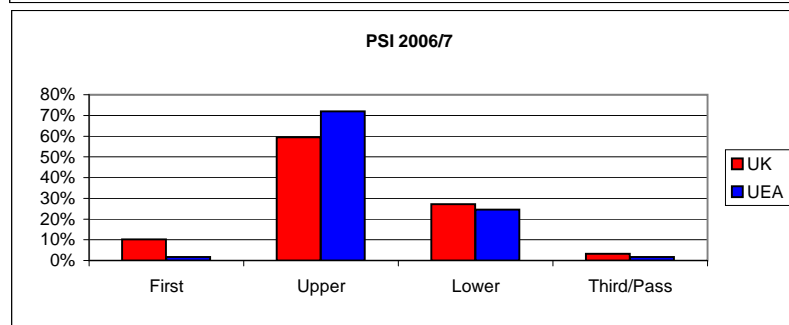
	Total awarded	First	Upper	Lower	Third
PHI					
UK	2265	345	1350	500	70
1994	460	55	295	95	15
UEA	52	6	36	8	2
UK		15.2%	59.6%	22.1%	3.1%
1994		12.0%	64.1%	20.7%	3.3%
UEA		11.5%	69.2%	15.4%	3.8%



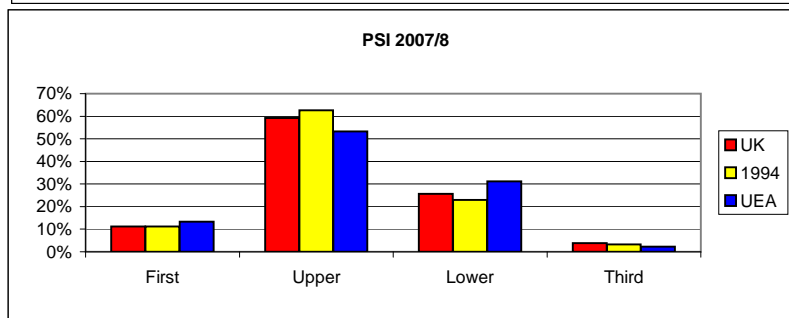
PSI	Total awarded	First	Upper	Lower	Third/Pass
UK	5465	515	3290	1515	145
UEA	75	5	45	25	0
UK		9.4%	60.2%	27.7%	2.7%
UEA		6.7%	60.0%	33.3%	0.0%



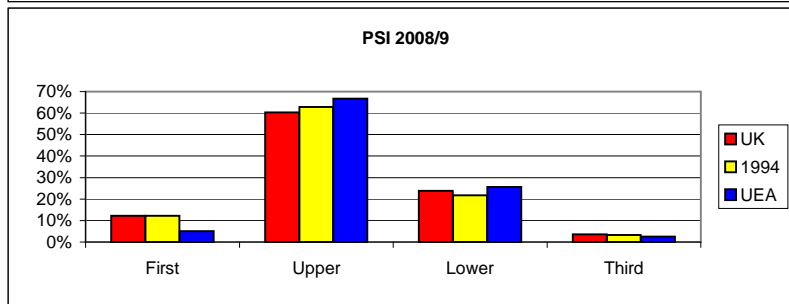
PSI	Total awarded	First	Upper	Lower	Third/Pass
UK	5530	560	3290	1500	180
UEA	57	1	41	14	1
UK		10.1%	59.5%	27.1%	3.3%
UEA		1.8%	71.9%	24.6%	1.8%



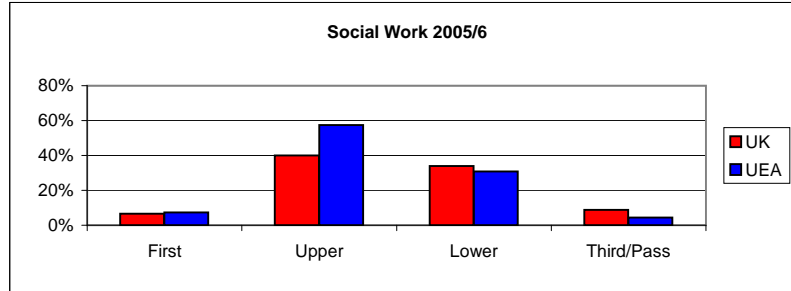
PSI	Total awarded	First	Upper	Lower	Third
UK	6035	675	3575	1550	235
1994	1525	170	955	350	50
UEA	45	6	24	14	1
UK		11.2%	59.2%	25.7%	3.9%
1994		11.1%	62.6%	23.0%	3.3%
UEA		13.3%	53.3%	31.1%	2.2%



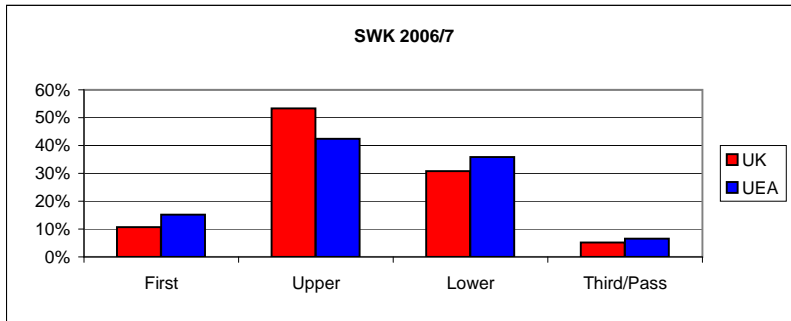
PSI	Total awarded	First	Upper	Lower	Third
UK	5965	725	3600	1425	215
1994	1560	190	980	340	50
UEA	117	6	78	30	3
UK		12.2%	60.4%	23.9%	3.6%
1994		12.2%	62.8%	21.8%	3.2%
UEA		5.1%	66.7%	25.6%	2.6%



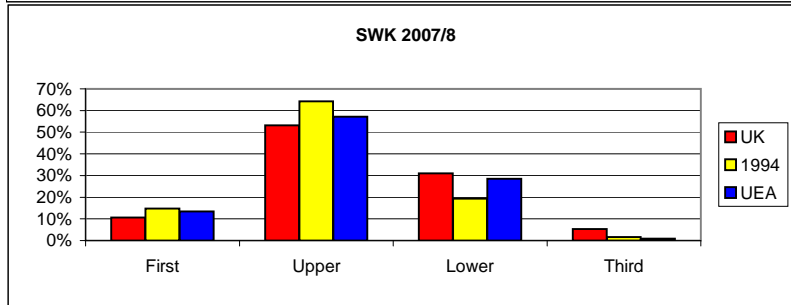
	Total awarded	First	Upper	Lower	Third/Pass
Social Work	4635	305	1850	1570	405
UK	68	5	39	21	3
UK		6.6%	39.9%	33.9%	8.7%
UEA		7.4%	57.4%	30.9%	4.4%



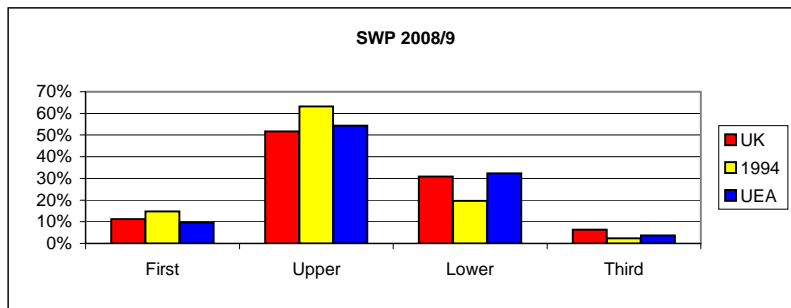
	Total awarded	First	Upper	Lower	Third/Pass
SWK	17435	1870	9300	5370	895
UK	92	14	39	33	6
UK		10.7%	53.3%	30.8%	5.1%
UEA		15.2%	42.4%	35.9%	6.5%



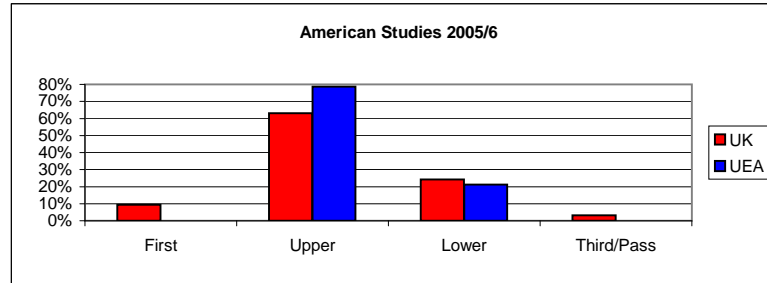
	Total awarded	First	Upper	Lower	Third
SWK	19855	2105	10545	6145	1060
1994	2240	330	1440	435	35
UEA	112	15	64	32	1
UK		10.6%	53.1%	30.9%	5.3%
1994		14.7%	64.3%	19.4%	1.6%
UEA		13.4%	57.1%	28.6%	0.9%



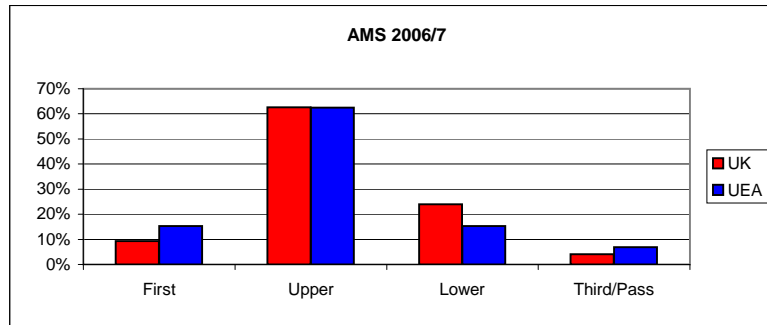
	Total awarded	First	Upper	Lower	Third
SWK	19760	2220	10210	6085	1245
1994	2395	355	1515	470	55
UEA	136	13	74	44	5
UK		11.2%	51.7%	30.8%	6.3%
1994		14.8%	63.3%	19.6%	2.3%
UEA		9.6%	54.4%	32.4%	3.7%



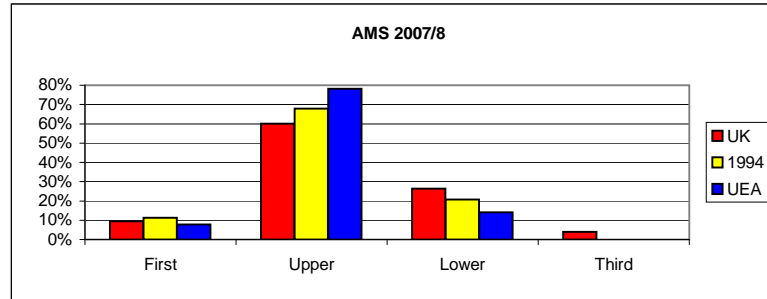
		Total				
American	awarded	First	Upper	Lower	Third/Pass	
UK	950	90	600	230	30	
UEA	80	0	63	17	0	
UK		9.5%	63.2%	24.2%	3.2%	
UEA		0.0%	78.8%	21.3%	0.0%	



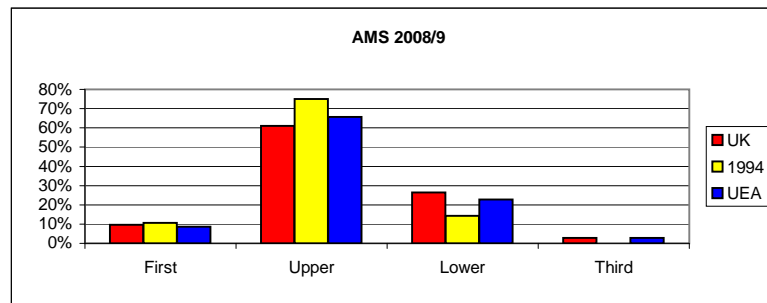
		Total				
AMS	awarded	First	Upper	Lower	Third/Pass	
UK	855	80	535	205	35	
UEA	72	11	45	11	5	
UK		9.4%	62.6%	24.0%	4.1%	
UEA		15.3%	62.5%	15.3%	6.9%	



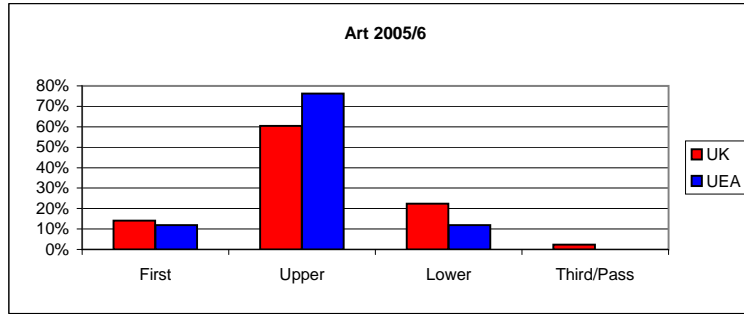
		Total				
AMS	awarded	First	Upper	Lower	Third	
UK	1115	105	670	295	45	
1994	265	30	180	55	0	
UEA	64	5	50	9	0	
UK		9.4%	60.1%	26.5%	4.0%	
1994		11.3%	67.9%	20.8%	0.0%	
UEA		7.8%	78.1%	14.1%	0.0%	



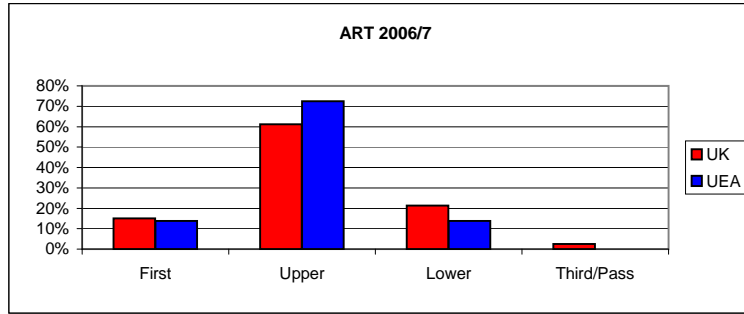
		Total				
AMS	awarded	First	Upper	Lower	Third	
UK	720	70	440	190	20	
1994	140	15	105	20	0	
UEA	35	3	23	8	1	
UK		9.7%	61.1%	26.4%	2.8%	
1994		10.7%	75.0%	14.3%	0.0%	
UEA		8.6%	65.7%	22.9%	2.9%	



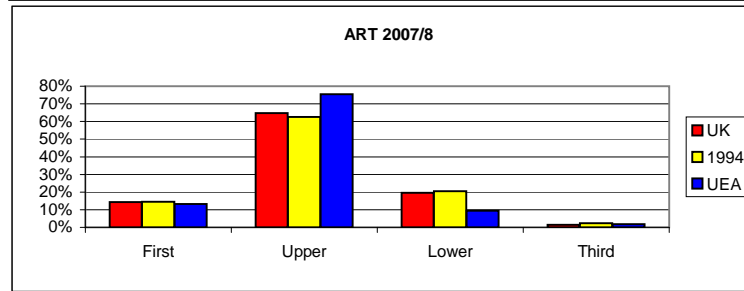
	Total awarded	First	Upper	Lower	Third/Pass
Art					
UK	2475	350	1495	555	60
UEA	59	7	45	7	0
UK		14.1%	60.4%	22.4%	2.4%
UEA		11.9%	76.3%	11.9%	0.0%



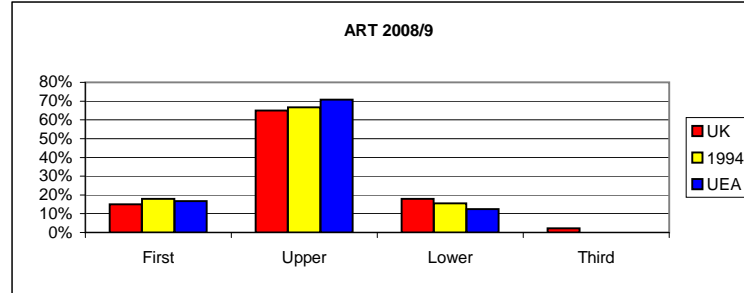
	Total awarded	First	Upper	Lower	Third/Pass
ART					
UK	2420	365	1480	515	60
UEA	29	4	21	4	0
UK		15.1%	61.2%	21.3%	2.5%
UEA		13.8%	72.4%	13.8%	0.0%



	Total awarded	First	Upper	Lower	Third
ART					
UK	1685	240	1090	330	25
1994	415	60	260	85	10
UEA	53	7	40	5	1
UK		14.2%	64.7%	19.6%	1.5%
1994		14.5%	62.7%	20.5%	2.4%
UEA		13.2%	75.5%	9.4%	1.9%

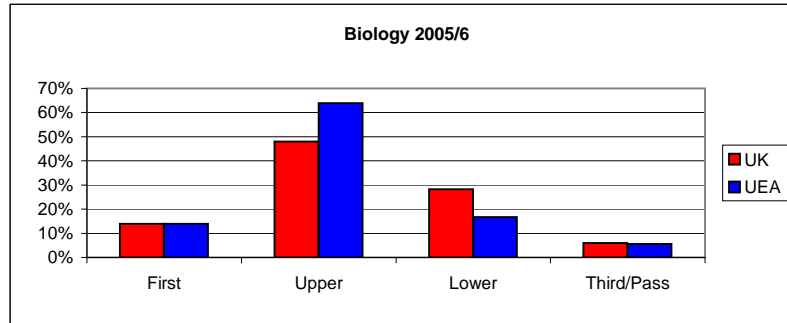


	Total awarded	First	Upper	Lower	Third
ART					
UK	1640	245	1065	295	35
1994	420	75	280	65	0
UEA	24	4	17	3	0
UK		14.9%	64.9%	18.0%	2.1%
1994		17.9%	66.7%	15.5%	0.0%
UEA		16.7%	70.8%	12.5%	0.0%

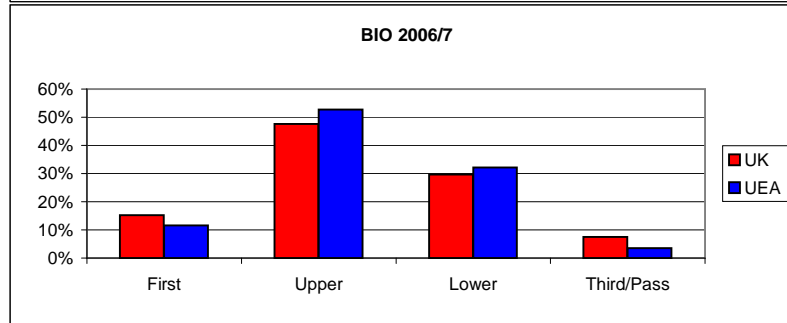


BIO C1 C7 C9.xls

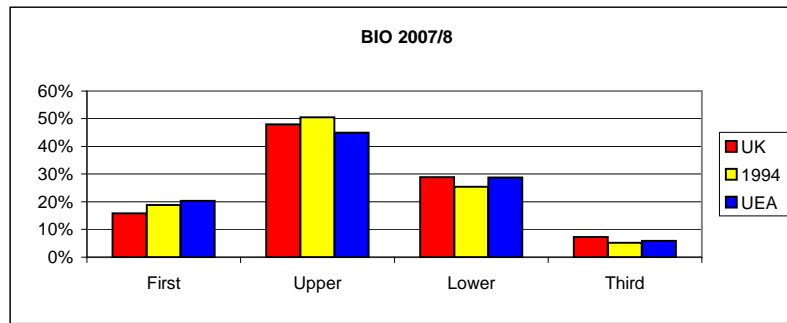
	Total awarded	First	Upper	Lower	Third/Pass
Biology					
UK	4450	620	2135	1255	265
UEA	36	5	23	6	2
UK		13.9%	48.0%	28.2%	6.0%
UEA		13.9%	63.9%	16.7%	5.6%



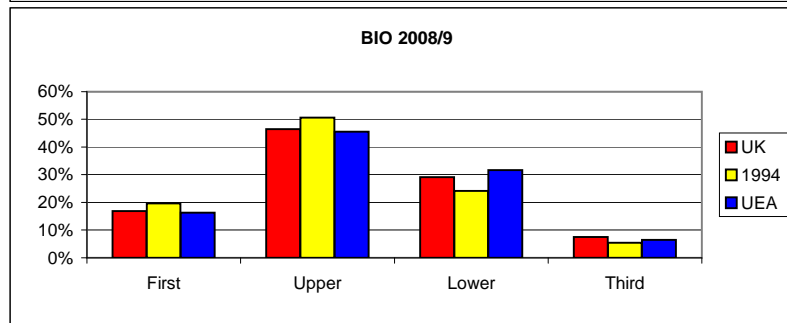
	Total awarded	First	Upper	Lower	Third/Pass
BIO					
UK	8245	1255	3925	2445	620
UEA	112	13	59	36	4
UK		15.2%	47.6%	29.7%	7.5%
UEA		11.6%	52.7%	32.1%	3.6%



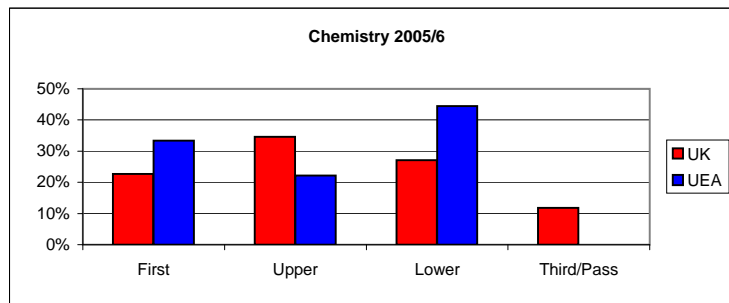
	Total awarded	First	Upper	Lower	Third
BIO					
UK	7330	1165	3515	2120	530
1994	1355	255	685	345	70
UEA	118	24	53	34	7
UK		15.9%	48.0%	28.9%	7.2%
1994		18.8%	50.6%	25.5%	5.2%
UEA		20.3%	44.9%	28.8%	5.9%



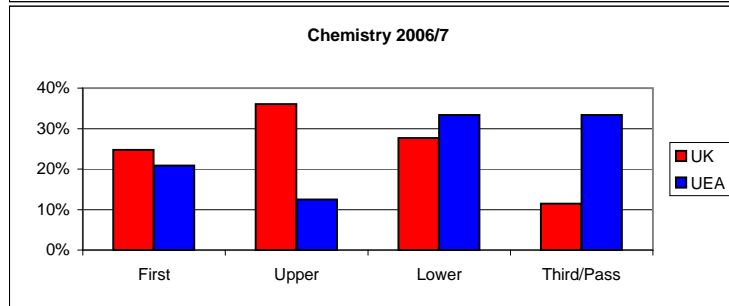
	Total awarded	First	Upper	Lower	Third
BIO					
UK	7635	1285	3550	2225	575
1994	1550	305	785	375	85
UEA	123	20	56	39	8
UK		16.8%	46.5%	29.1%	7.5%
1994		19.7%	50.6%	24.2%	5.5%
UEA		16.3%	45.5%	31.7%	6.5%



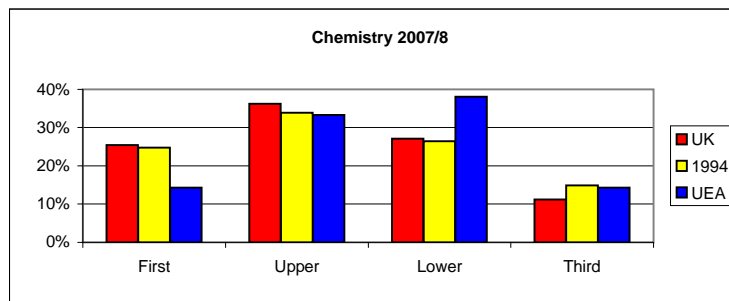
	Total awarded	First	Upper	Lower	Third/Pass
Chemistry					
UK	2530	575	875	685	300
UEA	9	3	2	4	0
UK		22.7%	34.6%	27.1%	11.9%
UEA		33.3%	22.2%	44.4%	0.0%



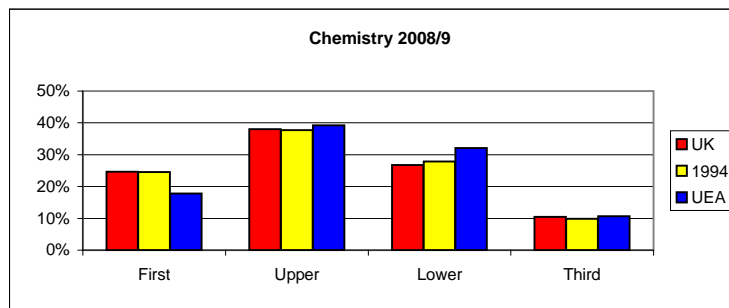
	Total awarded	First	Upper	Lower	Third/Pass
CHE					
UK	2565	635	925	710	295
UEA	24	5	3	8	8
UK		24.8%	36.1%	27.7%	11.5%
UEA		20.8%	12.5%	33.3%	33.3%



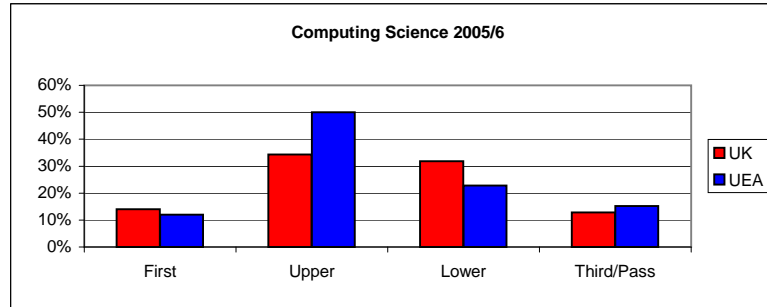
	Total awarded	First	Upper	Lower	Third
CHE					
UK	2730	695	990	740	305
1994	605	150	205	160	90
UEA	21	3	7	8	3
UK		25.5%	36.3%	27.1%	11.2%
1994		24.8%	33.9%	26.4%	14.9%
UEA		14.3%	33.3%	38.1%	14.3%



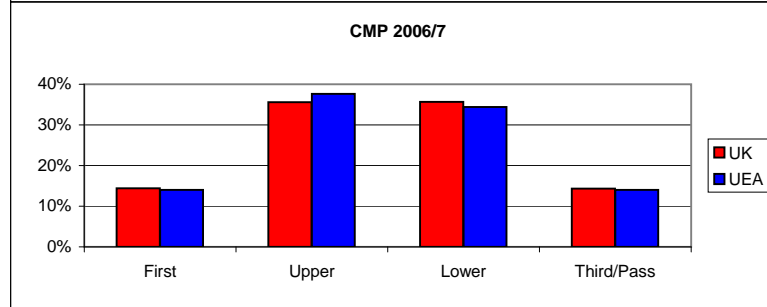
	Total awarded	First	Upper	Lower	Third
CHE					
UK	2855	705	1085	765	300
1994	610	150	230	170	60
UEA	28	5	11	9	3
UK		24.7%	38.0%	26.8%	10.5%
1994		24.6%	37.7%	27.9%	9.8%
UEA		17.9%	39.3%	32.1%	10.7%



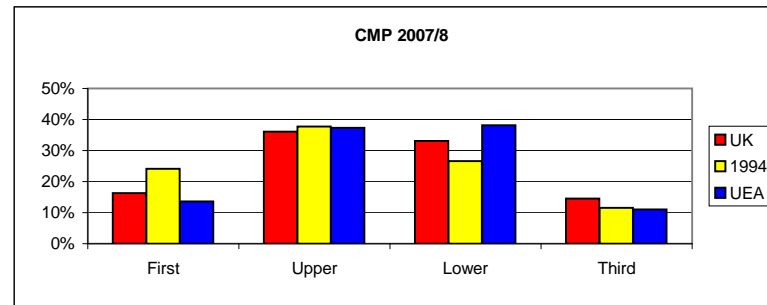
Total						
Computing	awarded	First	Upper	Lower	Third/Pass	
UK	12545	1755	4310	3990	1605	
UEA	92	11	46	21	14	
UK		14.0%	34.4%	31.8%	12.8%	
UEA		12.0%	50.0%	22.8%	15.2%	



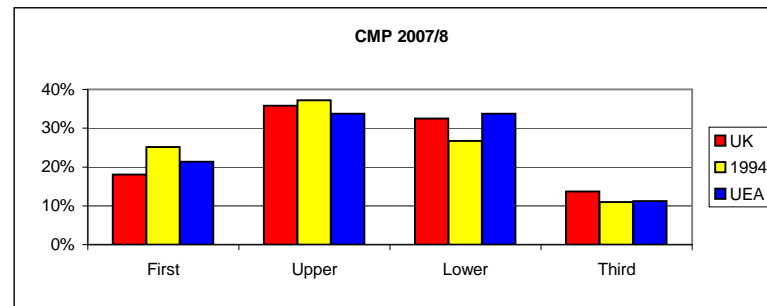
Total						
CMP	awarded	First	Upper	Lower	Third/Pass	
UK	14270	2060	5080	5090	2040	
UEA	93	13	35	32	13	
UK		14.4%	35.6%	35.7%	14.3%	
UEA		14.0%	37.6%	34.4%	14.0%	



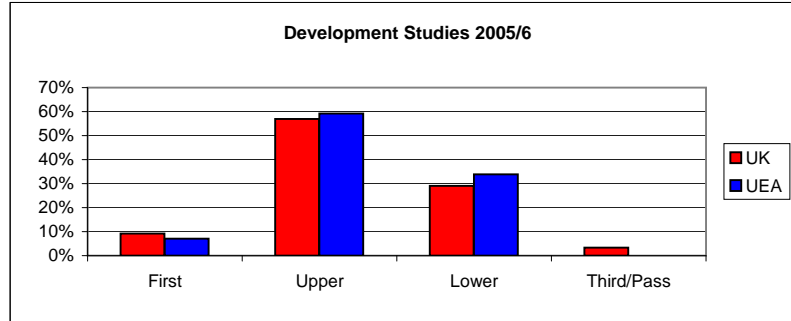
Total						
CMP	awarded	First	Upper	Lower	Third	
UK	12875	2100	4645	4265	1865	
1994	1035	250	390	275	120	
UEA	118	16	44	45	13	
UK		16.3%	36.1%	33.1%	14.5%	
1994		24.2%	37.7%	26.6%	11.6%	
UEA		13.6%	37.3%	38.1%	11.0%	



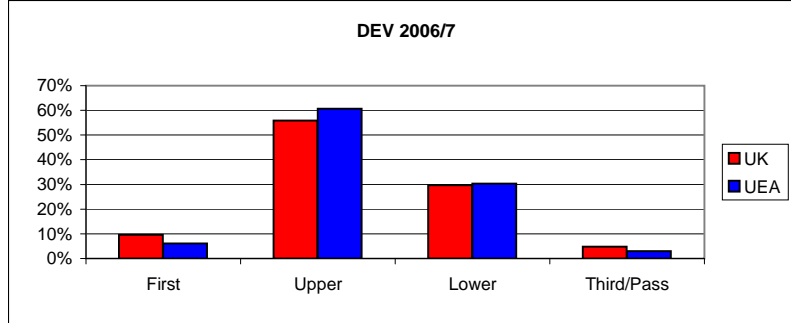
Total						
CMP	awarded	First	Upper	Lower	Third	
UK	12135	2190	4340	3945	1660	
1994	955	240	355	255	105	
UEA	89	19	30	30	10	
UK		18.0%	35.8%	32.5%	13.7%	
1994		25.1%	37.2%	26.7%	11.0%	
UEA		21.3%	33.7%	33.7%	11.2%	



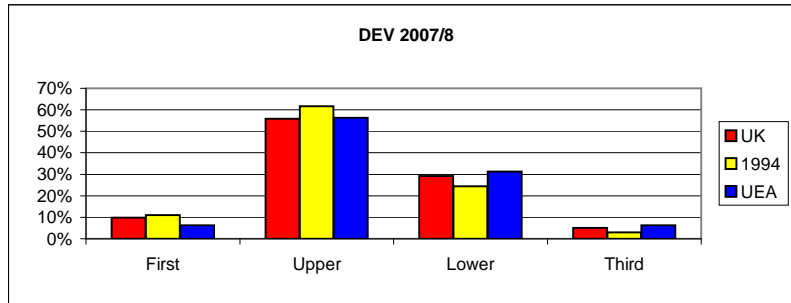
Total		awarded	First	Upper	Lower	Third/Pass
Developm		3090	285	1760	900	105
UK						
UEA		71	5	42	24	0
UK			9.2%	57.0%	29.1%	3.4%
UEA			7.0%	59.2%	33.8%	0.0%



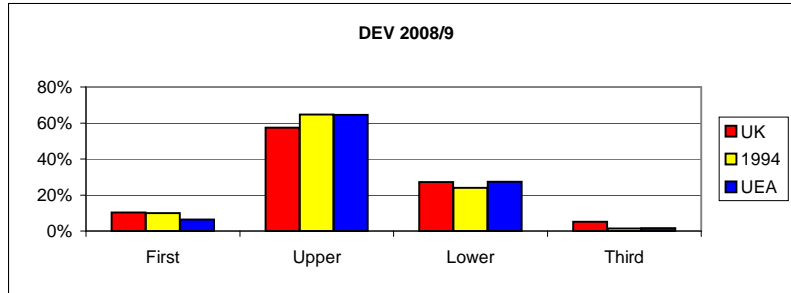
Total		awarded	First	Upper	Lower	Third/Pass
DEV		4300	415	2405	1275	205
UK						
UEA		66	4	40	20	2
UK			9.7%	55.9%	29.7%	4.8%
UEA			6.1%	60.6%	30.3%	3.0%



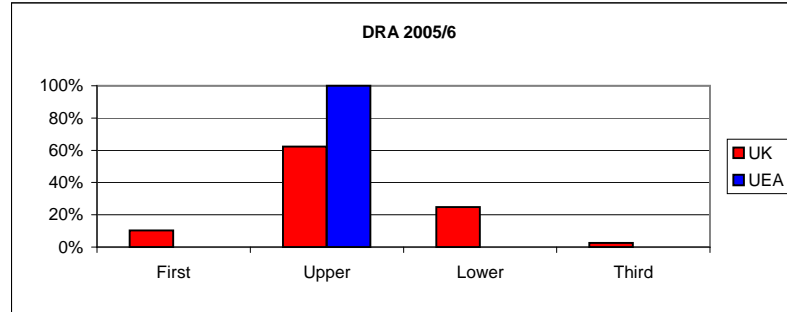
Total		awarded	First	Upper	Lower	Third
DEV		4545	450	2540	1325	230
UK						
1994		820	90	505	200	25
UEA		64	4	36	20	4
UK			9.9%	55.9%	29.2%	5.1%
1994			11.0%	61.6%	24.4%	3.0%
UEA			6.3%	56.3%	31.3%	6.3%



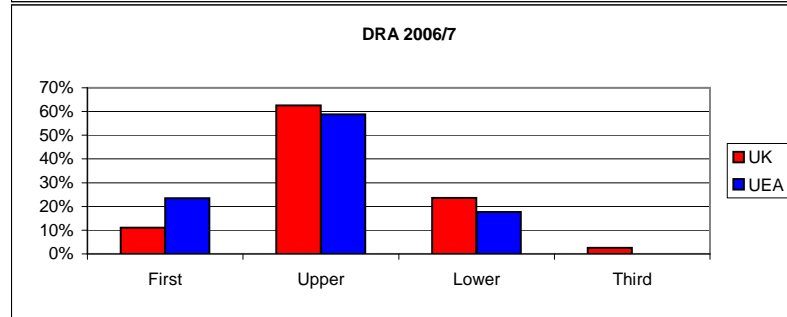
Total		awarded	First	Upper	Lower	Third
DEV		4165	430	2390	1130	215
UK						
1994		750	75	485	180	10
UEA		62	4	40	17	1
UK			10.3%	57.4%	27.1%	5.2%
1994			10.0%	64.7%	24.0%	1.3%
UEA			6.5%	64.5%	27.4%	1.6%



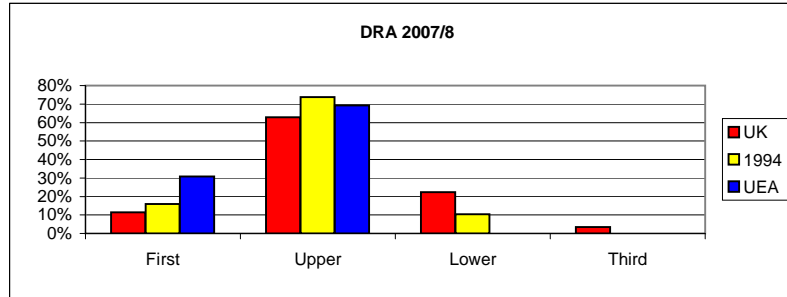
	Total awarded	First	Upper	Lower	Third
DRA					
UK	4145	425	2580	1030	110
UEA	20	0	20	0	0
UK		10.3%	62.2%	24.8%	2.7%
UEA		0.0%	100.0%	0.0%	0.0%



	Total awarded	First	Upper	Lower	Third
DRA					
UK	4415	490	2765	1045	115
UEA	17	4	10	3	0
UK		11.1%	62.6%	23.7%	2.6%
UEA		23.5%	58.8%	17.6%	0.0%



	Total awarded	First	Upper	Lower	Third
DRA					
UK	5375	610	3375	1200	190
1994	630	100	465	65	0
UEA	13	4	9	0	0
UK		11.3%	62.8%	22.3%	3.5%
1994		15.9%	73.8%	10.3%	0.0%
UEA		30.8%	69.2%	0.0%	0.0%



	Total awarded	First	Upper	Lower	Third
DRA					
UK	5305	675	3355	1140	135
1994	735	120	530	85	0
UEA	18	3	14	1	0
UK		12.7%	63.2%	21.5%	2.5%
1994		16.3%	72.1%	11.6%	0.0%
UEA		16.7%	77.8%	5.6%	0.0%

