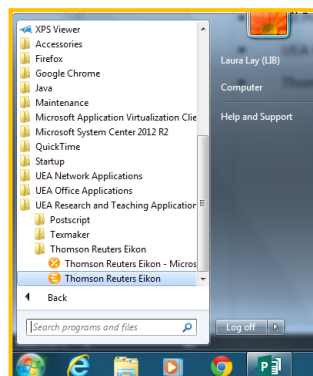


Thomson Reuters Eikon access and login guide

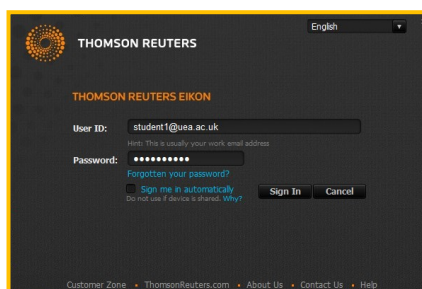
Thomson Reuters Eikon is available from these two dedicated PCs. Each machine is labelled with an individual Eikon username and password which you will need to enter each time you use the service.

To access Eikon:

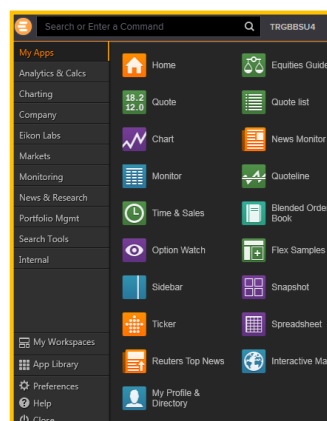
- Start Menu
- All Programs
- UEA Research and Teaching Applications
- Thomson Reuters Eikon folder
- Thomson Reuters Eikon



Login with the Eikon username and password - you can find this next to the PC.



Click on the Eikon symbol in the top left to open the Apps and Options.



If the username and password combination are rejected please ask the IT helpdesk to reset the password. This will take 1–2 hours as they will need to contact Thomson Reuters.

For help using Eikon please try the help option in the product, look at the Thomson Reuters support pages: <http://training.thomsonreuters.com/eikon> or contact Thomson Reuters using the contact portal: <http://my.thomsonreuters.com>