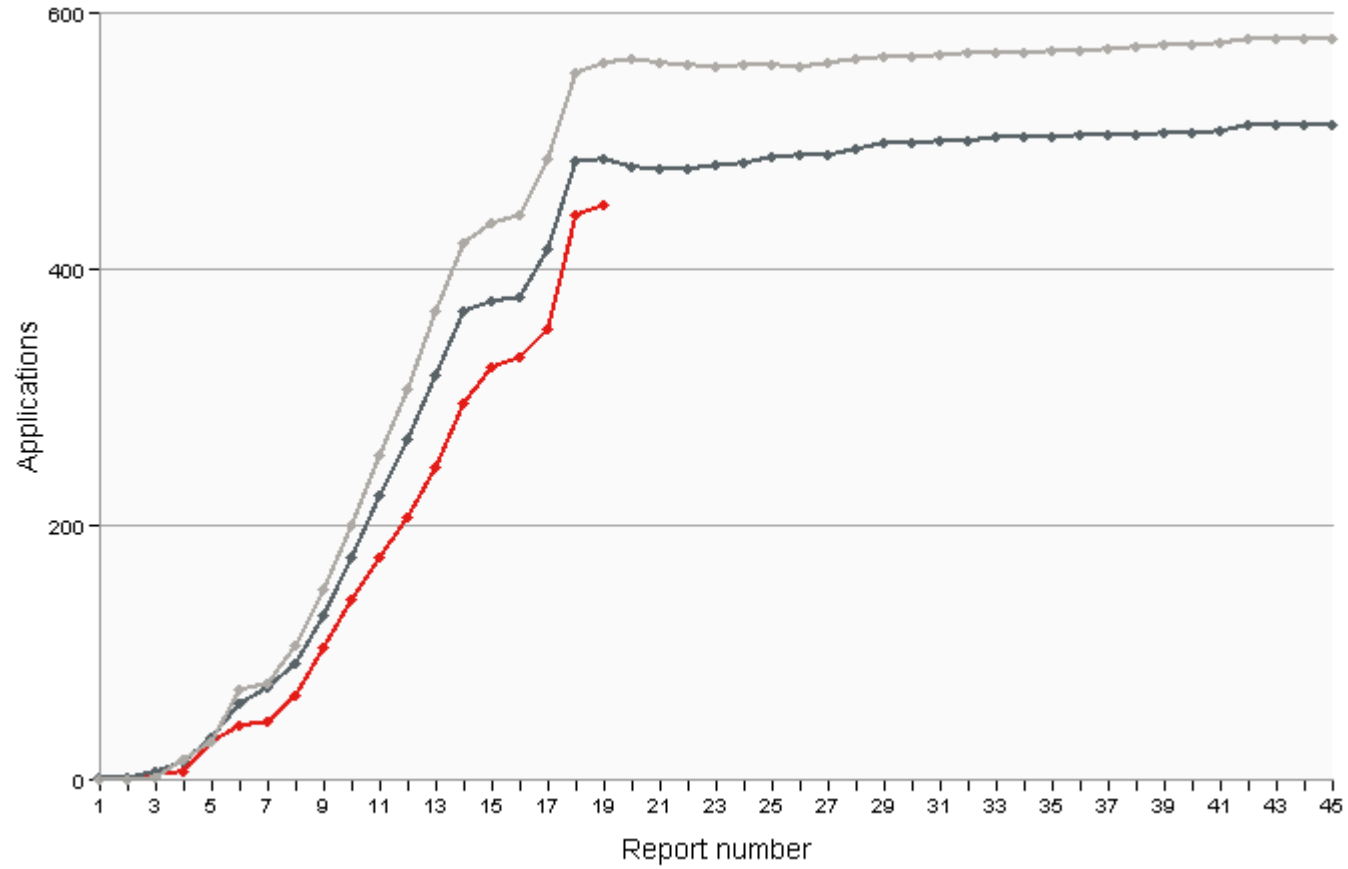


Bio. Sciences,
Bio Sciences with a
year in industry,
MSci Bio Sci
Bio Sciences with
year abroad
Ecology
Ecology with a year
abroad



Red=2017
Dark grey 2016
Light grey-2015

Click on a school

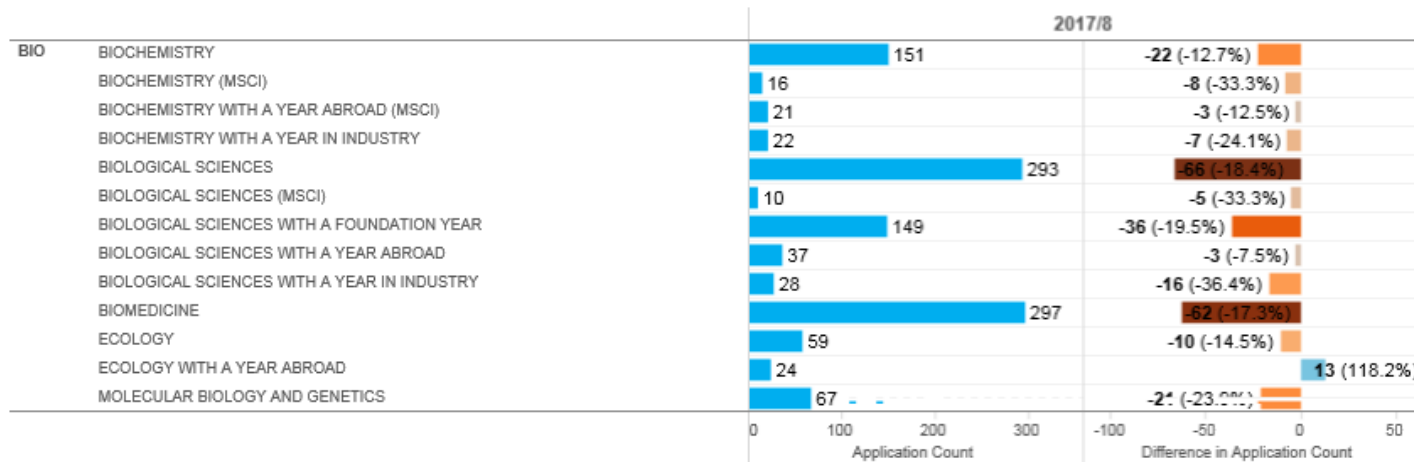
- HSC
- MED
- AMA
- HIS
- HUM
- LDC
- PPL
- BIO
- CHE
- CMP
- ENV
- MTH
- NAT
- PHA
- DEV
- ECO
- EDU
- LAW
- NBS
- PSY
- SWK

Admissions Week

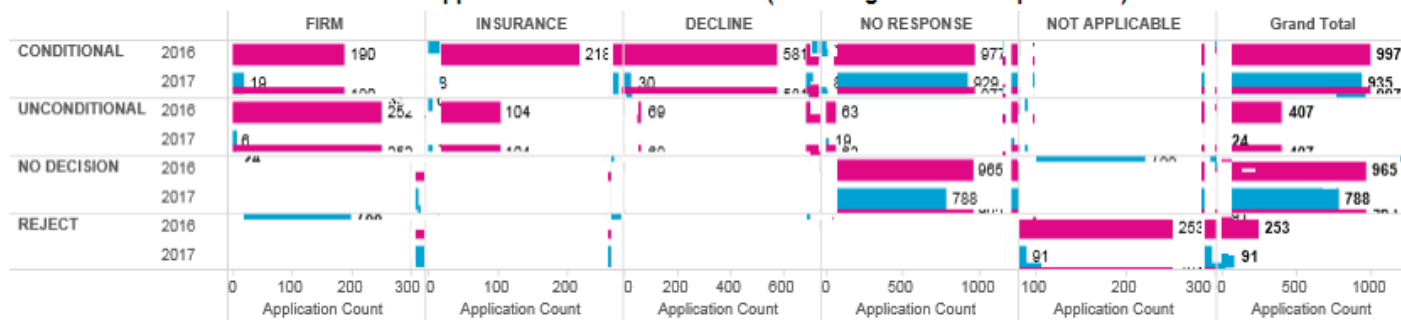
(All)

0

Click on a course



Total active applications and their statuses (excluding withdrawn applications)



Total active responses

